

For Research Use Only

CLEC14A Polyclonal antibody

Catalog Number: 23964-1-AP

1 Publications



Basic Information

Catalog Number:

23964-1-AP

Size:

150ul, Concentration: 500 ug/ml by Nanodrop and 267 ug/ml by Bradford method using BSA as the standard;

Source:

Rabbit

Isotype:

IgG

Immunogen Catalog Number:

AG21081

GenBank Accession Number:

BC031567

GeneID (NCBI):

161198

UNIPROT ID:

Q86T13

Full Name:

C-type lectin domain family 14, member A

Calculated MW:

490 aa, 52 kDa

Observed MW:

52 kDa, 100 kDa

Purification Method:

Antigen Affinity purified

Recommended Dilutions:

WB 1:1000-1:4000

Applications

Tested Applications:

WB, ELISA

Cited Applications:

WB, IHC

Species Specificity:

human, mouse, rat

Cited Species:

human, mouse

Positive Controls:

WB: mouse brain tissue, mouse skeletal muscle tissue, human heart tissue, rat brain tissue

Background Information

CLEC14A is a single-pass type I transmembrane protein whose extracellular domain consists of a C-type lectin-like domain (CTLD), a series of EGF-like domains, and a sushi-like domain (PMID: 23644659). CLEC14A is a member of the C-type lectin domain superfamily that also includes endosialin, thrombomodulin and CD93 (PMID: 16336259). It has been reported that CLEC14A is specifically expressed in endothelial cells and mediates cell to cell adhesion (PMID: 21095181). CLEC14A may be involved in tumor angiogenesis (PMID: 21706054; 23644659).

Notable Publications

Author	Pubmed ID	Journal	Application
Zeyu Su	34107098	FASEB J	WB, IHC

Storage

Storage:

Store at -20°C. Stable for one year after shipment.

Storage Buffer:

PBS with 0.02% sodium azide and 50% glycerol pH 7.3.

Aliquoting is unnecessary for -20°C storage

*** 20ul sizes contain 0.1% BSA

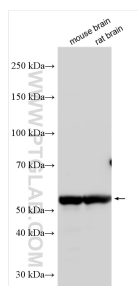
For technical support and original validation data for this product please contact:

T: 1 (888) 4PTGLAB (1-888-478-4522) (toll free in USA), or 1(312) 455-8498 (outside USA)

E: proteintech@ptglab.com
W: ptglab.com

This product is exclusively available under Proteintech Group brand and is not available to purchase from any other manufacturer.

Selected Validation Data



Various lysates were subjected to SDS PAGE followed by western blot with 23964-1-AP (CLEC14A antibody) at dilution of 1:2000 incubated at room temperature for 1.5 hours.