

For Research Use Only

BARHL2 Polyclonal antibody

Catalog Number: 23976-1-AP



Basic Information

Catalog Number: 23976-1-AP	GenBank Accession Number: BC126439	Purification Method: Antigen Affinity purified
Size: 150ul , Concentration: 240 µg/ml by Nanodrop and 167 µg/ml by Bradford method using BSA as the standard;	GeneID (NCBI): 343472	Recommended Dilutions: WB 1:200-1:1000 IHC 1:20-1:200 IF 1:50-1:500
Source: Rabbit	Full Name: BarH-like homeobox 2	
Isotype: IgG	Calculated MW: 387 aa, 42 kDa	
Immunogen Catalog Number: AG21156	Observed MW: 42-45 kDa	

Applications

Tested Applications: IF, IHC, WB, ELISA	Positive Controls: WB : HepG2 cells, NIH/3T3 cells IHC : human testis tissue, IF : HepG2 cells,
Species Specificity: human, mouse	
Note-IHC: suggested antigen retrieval with TE buffer pH 9.0; (*) Alternatively, antigen retrieval may be performed with citrate buffer pH 6.0	

Background Information

BARHL2 also named as BarH like homeobox 2 is 279 amino acid protein, which contains 1 homeobox DNA-binding domain. BARHL2 localizes in nucleus and belongs to BAR homeobox family. BARHL2 as a transcription factor binds optimally to the DNA consensus sequence. Barx2 may differentially control the expression of L1 and other target genes during embryonic development. Barx2 is expressed in several smooth muscle-containing tissues, as well as skeletal muscle, brain, tongue and esophagus.

Storage

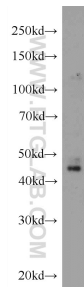
Storage:
Store at -20°C. Stable for one year after shipment.
Storage Buffer:
PBS with 0.02% sodium azide and 50% glycerol pH 7.3.
Aliquoting is unnecessary for -20°C storage

*** 20ul sizes contain 0.1% BSA

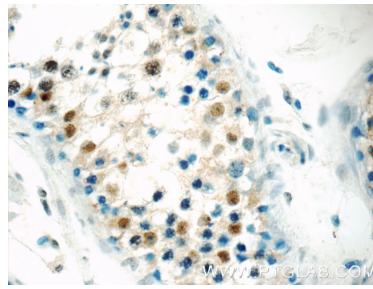
For technical support and original validation data for this product please contact:
T: 1 (888) 4PTGLAB (1-888-478-4522) (toll free in USA), or 1(312) 455-8498 (outside USA) E: proteintech@ptglab.com W: ptglab.com

This product is exclusively available under Proteintech Group brand and is not available to purchase from any other manufacturer.

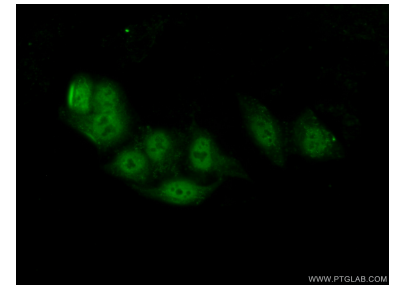
Selected Validation Data



HepG2 cells were subjected to SDS PAGE followed by western blot with 23976-1-AP (BARHL2 Antibody) at dilution of 1:300 incubated at room temperature for 1.5 hours.



Immunohistochemical analysis of paraffin-embedded human testis tissue slide using 23976-1-AP (BARHL2 Antibody) at dilution of 1:50 (under 40x lens).



Immunofluorescent analysis of (10% Formaldehyde) fixed HepG2 cells using 23976-1-AP (BARHL2 antibody) at dilution of 1:50 and Alexa Fluor 488-conjugated AffiniPure Goat Anti-Rabbit IgG(H+L).