

For Research Use Only

ZBTB20 Polyclonal antibody

Catalog Number: 23987-1-AP

Featured Product

9 Publications



Basic Information

Catalog Number:

23987-1-AP

Size:

150ul, Concentration: 450 ug/ml by Nanodrop;

Source:

Rabbit

Isotype:

IgG

Immunogen Catalog Number:

AG21140

GenBank Accession Number:

BC029041

GeneID (NCBI):

26137

UNIPROT ID:

Q9HC78

Full Name:

zinc finger and BTB domain containing 20

Calculated MW:

668 aa, 73 kDa

Observed MW:

73 kDa

Purification Method:

Antigen Affinity purified

Recommended Dilutions:

WB 1:2000-1:10000

IHC 1:20-1:200

IF-P 1:50-1:500

Applications

Tested Applications:

WB, IHC, IF-P, ELISA

Cited Applications:

WB, IHC, IF

Species Specificity:

human, mouse, rat

Cited Species:

human, mouse, rat

Note-IHC: suggested antigen retrieval with TE buffer pH 9.0; (*) Alternatively, antigen retrieval may be performed with citrate buffer pH 6.0

Positive Controls:

WB : HepG2 cells, HEK-293 cells, Jurkat cells, L02 cells, mouse brain tissue, mouse liver tissue, RAW 264.7 cells, rat liver tissue

IHC : human kidney tissue,

IF-P : mouse brain tissue,

Background Information

Zinc-finger proteins contain DNA-binding domains and have a wide variety of functions, most of which encompass some form of transcriptional activation or repression. ZBTB20 (zinc finger and BTB domain containing 20), also known as HOF, DPZF, ODA-85 or ZNF288, is a 741 amino acid protein that localizes to the nucleus and contains one BTB (POZ) domain and five C2H2-type zinc fingers. Expressed in thymus, spleen, lymph node and fetal liver, ZBTB20 exists as either a monomer or a homodimer that is thought to function as a transcription factor, playing a role in hematopoiesis, oncogenesis and immune responses. Multiple isoforms of ZBTB20 exist due to alternative splicing events.

Notable Publications

Author	Pubmed ID	Journal	Application
Justin L Tosh	29062914	Wellcome Open Res	WB
Yu Jin	34824542	J Inflamm Res	WB, IHC
Bo Pan	36335997	Brain Res	WB, IHC

Storage

Storage:

Store at -20°C. Stable for one year after shipment.

Storage Buffer:

PBS with 0.02% sodium azide and 50% glycerol pH 7.3.

Aliquoting is unnecessary for -20°C storage

*** 20ul sizes contain 0.1% BSA

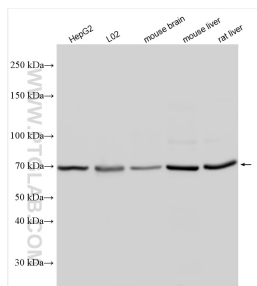
For technical support and original validation data for this product please contact:

T: 1 (888) 4PTGLAB (1-888-478-4522) (toll free in USA), or 1(312) 455-8498 (outside USA)

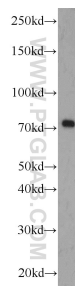
E: proteintech@ptglab.com
W: ptglab.com

This product is exclusively available under Proteintech Group brand and is not available to purchase from any other manufacturer.

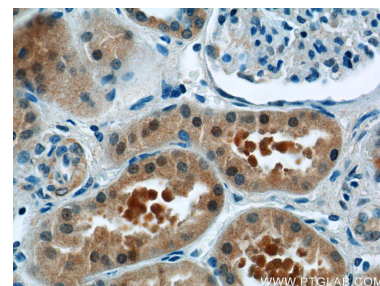
Selected Validation Data



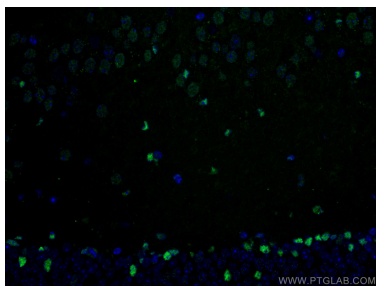
Various lysates were subjected to SDS PAGE followed by western blot with 23987-1-AP (ZBTB20 antibody) at dilution of 1:5000 incubated at room temperature for 1.5 hours.



L02 cells were subjected to SDS PAGE followed by western blot with 23987-1-AP (ZBTB20 antibody) at dilution of 1:1000 incubated at room temperature for 1.5 hours.



Immunohistochemical analysis of paraffin-embedded human kidney tissue slide using 23987-1-AP (ZBTB20 Antibody) at dilution of 1:50 (under 40x lens).



Immunofluorescent analysis of (4% PFA) fixed mouse brain tissue using ZBTB20 antibody (23987-1-AP) at dilution of 1:200 and CoraLite®488-Conjugated Goat Anti-Rabbit IgG(H+L).