

For Research Use Only

TFAM Polyclonal antibody

Catalog Number: 23996-1-AP

Featured Product

10 Publications



Basic Information

Catalog Number:

23996-1-AP

Size:

150ul, Concentration: 400 ug/ml by Nanodrop and 353 ug/ml by Bradford method using BSA as the standard;

Source:

Rabbit

Isotype:

IgG

Immunogen Catalog Number:

AG21196

GenBank Accession Number:

BC126366

GeneID (NCBI):

7019

UNIPROT ID:

Q00059

Full Name:

transcription factor A, mitochondrial

Calculated MW:

246 aa, 29 kDa

Observed MW:

25 kDa

Purification Method:

Antigen Affinity purified

Recommended Dilutions:

WB: 1:1000-1:6000

IP: 0.5-4.0 ug for 1.0-3.0 mg of total protein lysate

IHC: 1:50-1:500

IF/ICC: 1:20-1:200

Applications

Tested Applications:

WB, IHC, IF/ICC, IP, ELISA

Cited Applications:

WB, IF

Species Specificity:

human

Cited Species:

human

Note-IHC: suggested antigen retrieval with TE buffer pH 9.0; (*) Alternatively, antigen retrieval may be performed with citrate buffer pH 6.0

Positive Controls:

WB: A431 cells, HEK-293 cells, HL-60 cells, HeLa cells, MCF-7 cells

IP: HeLa cells,

IHC: human kidney tissue,

IF/ICC: HepG2 cells,

Background Information

TFAM, also named as TCF6L2, MtTF1, TCF6, TCF6L1, TCF6L3 and mtTFA, is a mitochondrial transcription factor that is a key activator of mitochondrial transcription as well as a participant in mitochondrial genome replication. It is involved in mitochondrial transcription regulation. TFAM is required for accurate and efficient promoter recognition by the mitochondrial RNA polymerase. It activates transcription by binding immediately upstream of transcriptional start sites. TFAM is able to unwind and bend DNA.

Notable Publications

Author	Pubmed ID	Journal	Application
Ying Shu	36314841	EMBO J	WB
Wenbin Hua	31666206	Biochim Biophys Acta Mol Basis Dis	WB
Jana Key	34943861	Cells	IF

Storage

Storage:

Store at -20°C. Stable for one year after shipment.

Storage Buffer:

PBS with 0.02% sodium azide and 50% glycerol, pH7.3

Aliquoting is unnecessary for -20°C storage

*** 20ul sizes contain 0.1% BSA

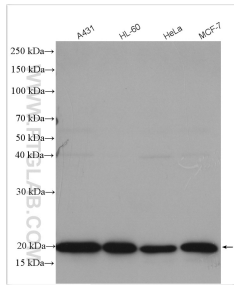
For technical support and original validation data for this product please contact:

T: 1 (888) 4PTGLAB (1-888-478-4522) (toll free in USA), or 1(312) 455-8498 (outside USA)

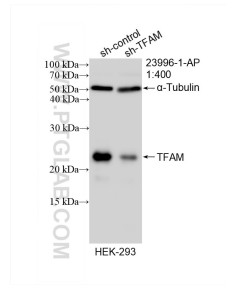
E: proteintech@ptglab.com
W: ptglab.com

This product is exclusively available under Proteintech Group brand and is not available to purchase from any other manufacturer.

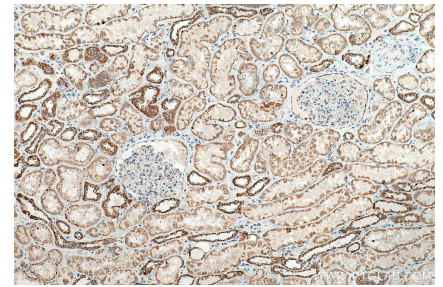
Selected Validation Data



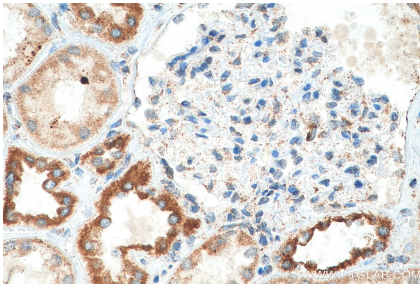
Various lysates were subjected to SDS PAGE followed by western blot with 23996-1-AP (TFAM antibody) at dilution of 1:3000 incubated at room temperature for 1.5 hours.



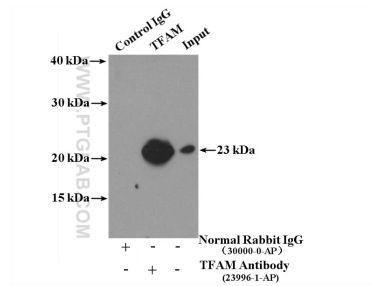
WB result of TFAM antibody (23996-1-AP; 1:400; incubated at room temperature for 1.5 hours) with sh-Control and sh-TFAM transfected HEK-293 cells.



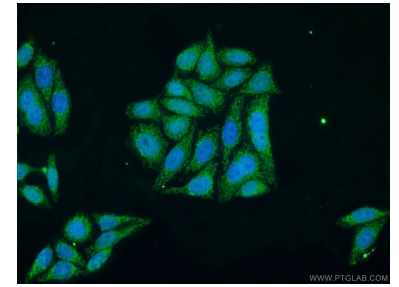
Immunohistochemical analysis of paraffin-embedded human kidney tissue slide using 23996-1-AP (TFAM antibody) at dilution of 1:200 (under 10x lens). Heat mediated antigen retrieval with Tris-EDTA buffer (pH 9.0).



Immunohistochemical analysis of paraffin-embedded human kidney tissue slide using 23996-1-AP (TFAM antibody) at dilution of 1:200 (under 40x lens). Heat mediated antigen retrieval with Tris-EDTA buffer (pH 9.0).



IP result of anti-TFAM (IP: 23996-1-AP, 4ug; Detection: 23996-1-AP 1:1000) with HeLa cells lysate 2500ug.



Immunofluorescent analysis of HepG2 cells using 23996-1-AP (TFAM antibody) at dilution of 1:50 and Alexa Fluor 488-conjugated AffiniPure Goat Anti-Rabbit IgG(H+L).