

For Research Use Only

CXorf56 Polyclonal antibody

Catalog Number: 24021-1-AP

4 Publications



Basic Information

Catalog Number:

24021-1-AP

Size:

150ul, Concentration: 600 ug/ml by Nanodrop and 280 ug/ml by Bradford method using BSA as the standard;

Source:

Rabbit

Isotype:

IgG

Immunogen Catalog Number:

AG19856

GenBank Accession Number:

BC023506

GeneID (NCBI):

63932

UNIPROT ID:

Q9H5V9

Full Name:

chromosome X open reading frame 56

Calculated MW:

222 aa, 26 kDa

Observed MW:

26-30 kDa

Purification Method:

Antigen Affinity purified

Recommended Dilutions:

WB 1:500-1:2000

IP 0.5-4.0 ug for 1.0-3.0 mg of total protein lysate

IF/ICC 1:20-1:200

Applications

Tested Applications:

WB, IF/ICC, IP, ELISA

Cited Applications:

WB, IP

Species Specificity:

human, mouse

Cited Species:

human, monkey

Positive Controls:

WB : HeLa cells, HEK-293 cells, mouse kidney tissue

IP : mouse kidney tissue,

IF/ICC : HeLa cells,

Background Information

CxORF56 (also known as STEEP) is an evolutionarily highly conserved protein whose function is unknown. Recently CxORF56 has been identified as a protein that interacts with STING, and it is essential for STING ER exit. CxORF56-dependent STING ER exit is essential for STING signaling in antiviral defense and in inflammatory diseases.

Notable Publications

Author	Pubmed ID	Journal	Application
Thaneas Prabakaran	33813142	EBioMedicine	WB
Bao-Cun Zhang	38553448	Nat Commun	WB
Ying Zhu	37156759	NPJ Breast Cancer	WB,IP

Storage

Storage:

Store at -20°C. Stable for one year after shipment.

Storage Buffer:

PBS with 0.02% sodium azide and 50% glycerol pH 7.3.

Aliquoting is unnecessary for -20°C storage

*** 20ul sizes contain 0.1% BSA

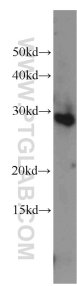
For technical support and original validation data for this product please contact:

T: 1 (888) 4PTGLAB (1-888-478-4522) (toll free in USA), or 1(312) 455-8498 (outside USA)

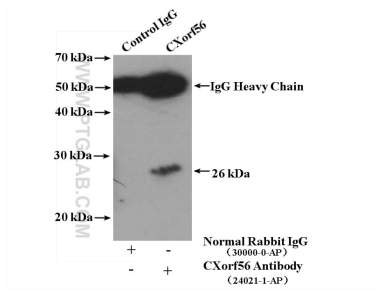
E: proteintech@ptglab.com
W: ptglab.com

This product is exclusively available under Proteintech Group brand and is not available to purchase from any other manufacturer.

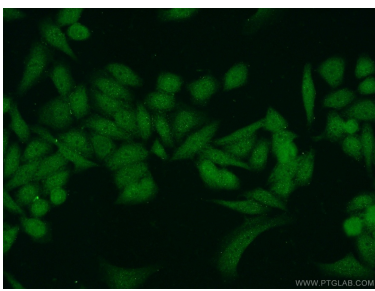
Selected Validation Data



HeLa cells were subjected to SDS PAGE followed by western blot with 24021-1-AP (CXorf56 antibody) at dilution of 1:1000 incubated at room temperature for 1.5 hours.



IP result of anti-CXorf56 (IP:24021-1-AP, 4ug; Detection:24021-1-AP 1:1000) with mouse kidney tissue lysate 8000ug.



Immunofluorescent analysis of HeLa cells using 24021-1-AP (CXorf56 antibody) at dilution of 1:50 and Alexa Fluor 488-conjugated Goat Anti-Rabbit IgG(H+L).