

For Research Use Only

ANKLE1 Polyclonal antibody

Catalog Number: 24080-1-AP

1 Publications



Basic Information

Catalog Number:

24080-1-AP

Size:

150ul, Concentration: 500 ug/ml by Nanodrop and 273 ug/ml by Bradford method using BSA as the standard;

Source:

Rabbit

Isotype:

IgG

Immunogen Catalog Number:

AG21253

GenBank Accession Number:

BC125274

GeneID (NCBI):

126549

UNIPROT ID:

Q8NAG6

Full Name:

ankyrin repeat and LEM domain containing 1

Calculated MW:

615 aa, 67 kDa

Observed MW:

67 kDa

Purification Method:

Antigen Affinity purified

Recommended Dilutions:

WB 1:500-1:1000

IHC 1:20-1:200

IF/ICC 1:50-1:500

Applications

Tested Applications:

WB, IHC, IF/ICC, ELISA

Cited Applications:

WB, IHC

Species Specificity:

human

Cited Species:

human

Note-IHC: suggested antigen retrieval with TE buffer pH 9.0; (*) Alternatively, antigen retrieval may be performed with citrate buffer pH 6.0

Positive Controls:

WB : HeLa cells, K-562 cells

IHC : human breast cancer tissue,

IF/ICC : HeLa cells,

Notable Publications

Author	Pubmed ID	Journal	Application
Tianzhen He	35650630	World J Surg Oncol	WB,IHC

Storage

Storage:

Store at -20°C. Stable for one year after shipment.

Storage Buffer:

PBS with 0.02% sodium azide and 50% glycerol pH 7.3.

Aliquoting is unnecessary for -20°C storage

*** 20ul sizes contain 0.1% BSA

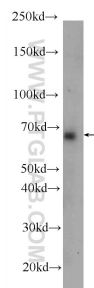
For technical support and original validation data for this product please contact:

T: 1 (888) 4PTGLAB (1-888-478-4522) (toll free in USA), or 1(312) 455-8498 (outside USA)

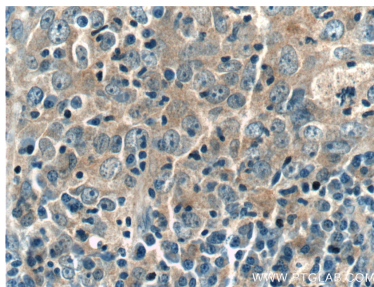
E: proteintech@ptglab.com
W: ptglab.com

This product is exclusively available under Proteintech Group brand and is not available to purchase from any other manufacturer.

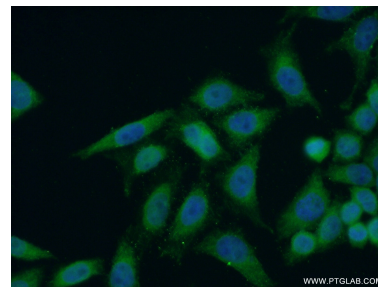
Selected Validation Data



HeLa cells were subjected to SDS PAGE followed by western blot with 24080-1-AP (ANKLE1 Antibody) at dilution of 1:500 incubated at room temperature for 1.5 hours.



Immunohistochemical analysis of paraffin-embedded human breast cancer tissue slide using 24080-1-AP (ANKLE1 Antibody) at dilution of 1:50 (under 40x Lens).



Immunofluorescent analysis of (-20°C Ethanol) fixed HeLa cells using 24080-1-AP (ANKLE1 antibody) at dilution of 1:50 and Alexa Fluor 488-conjugated Goat Anti-Rabbit IgG(H+L).