

For Research Use Only

# SIL1 Polyclonal antibody

Catalog Number: 24110-1-AP

3 Publications



## Basic Information

Catalog Number:

24110-1-AP

Size:

150ul, Concentration: 800 ug/ml by Nanodrop;

Source:

Rabbit

Isotype:

IgG

Immunogen Catalog Number:

AG21367

GenBank Accession Number:

BC011568

GeneID (NCBI):

64374

UNIPROT ID:

Q9H173

Full Name:

SIL1 homolog, endoplasmic reticulum chaperone (S. cerevisiae)

Calculated MW:

52 kDa

Observed MW:

52 kDa

Purification Method:

Antigen Affinity purified

Recommended Dilutions:

WB 1:1000-1:4000

IHC 1:20-1:200

IF/ICC 1:10-1:100

## Applications

Tested Applications:

WB, IHC, IF/ICC, ELISA

Cited Applications:

WB

Species Specificity:

human, mouse, rat

Cited Species:

human, mouse

**Note-IHC: suggested antigen retrieval with TE buffer pH 9.0; (\*) Alternatively, antigen retrieval may be performed with citrate buffer pH 6.0**

Positive Controls:

WB: L02 cells, mouse kidney tissue, mouse liver tissue, rat liver tissue

IHC: human kidney tissue, mouse colon tissue, mouse testis tissue

IF/ICC: HepG2 cells,

## Notable Publications

Author	Pubmed ID	Journal	Application
Francesca Potenza	34830330	Int J Mol Sci	WB
Viraj P Ichhaporia	25473114	Mol Biol Cell	WB
Yuan Yuan Xu	38850350	Mol Neurobiol	WB

## Storage

Storage:

Store at -20°C. Stable for one year after shipment.

Storage Buffer:

PBS with 0.02% sodium azide and 50% glycerol pH 7.3.

Aliquoting is unnecessary for -20°C storage

\*\*\* 20ul sizes contain 0.1% BSA

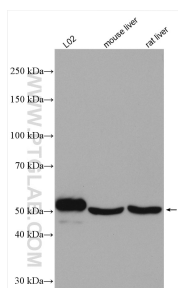
For technical support and original validation data for this product please contact:

T: 1 (888) 4PTGLAB (1-888-478-4522) (toll free in USA), or 1(312) 455-8498 (outside USA)

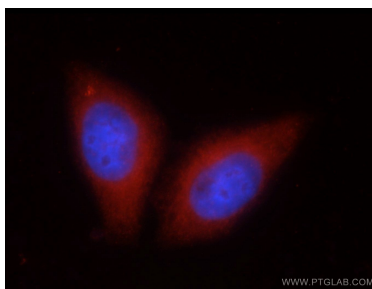
E: [proteintech@ptglab.com](mailto:proteintech@ptglab.com)  
W: [ptglab.com](http://ptglab.com)

This product is exclusively available under Proteintech Group brand and is not available to purchase from any other manufacturer.

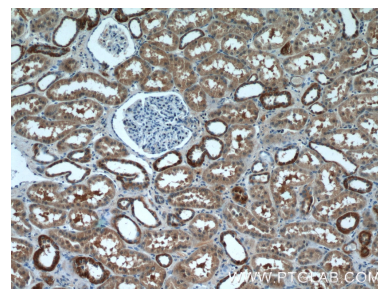
## Selected Validation Data



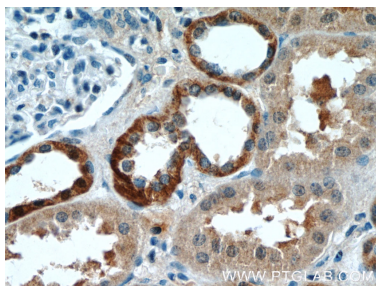
Various lysates were subjected to SDS PAGE followed by western blot with 24110-1-AP (SIL1 antibody) at dilution of 1:2000 incubated at room temperature for 1.5 hours.



Immunofluorescent analysis of HepG2 cells using 24110-1-AP (SIL1 antibody) at dilution of 1:25 and Rhodamine-Goat anti-Rabbit IgG.



Immunohistochemical analysis of paraffin-embedded human kidney tissue slide using 24110-1-AP (SIL1 Antibody) at dilution of 1:50 (under 10x lens).



Immunohistochemical analysis of paraffin-embedded human kidney tissue slide using 24110-1-AP (SIL1 Antibody) at dilution of 1:50 (under 40x lens).