

For Research Use Only

# RPAP1 Polyclonal antibody

Catalog Number: 24116-1-AP



## Basic Information

<b>Catalog Number:</b> 24116-1-AP	<b>GenBank Accession Number:</b> BC000246	<b>Purification Method:</b> Antigen Affinity purified
<b>Size:</b> 150ul , Concentration: 1000 µg/ml by Nanodrop and 480 µg/ml by Bradford method using BSA as the standard;	<b>GeneID (NCBI):</b> 26015	<b>Recommended Dilutions:</b> WB 1:2000-1:12000
<b>Source:</b> Rabbit	<b>Full Name:</b> RNA polymerase II associated protein 1	
<b>Isotype:</b> IgG	<b>Calculated MW:</b> 153 kDa	
<b>Immunogen Catalog Number:</b> AG7856	<b>Observed MW:</b> 153 kDa	

## Applications

<b>Tested Applications:</b> WB, ELISA	<b>Positive Controls:</b> WB : HEK-293 cells, HeLa cells
<b>Species Specificity:</b> human, mouse	

## Background Information

RNA polymerase II-associated protein 1 (RPAP1) encodes a nuclear 153-kDa protein, and forms an interface between the RNA polymerase II (RNAPII) enzyme and chaperone/scaffolding protein, suggesting that it is required to connect RNA polymerase II to regulators of protein complex formation. RPAP1 is required for interaction of the RNA polymerase II complex with acetylated histone H3 and the subsequent DNA transcription.

## Storage

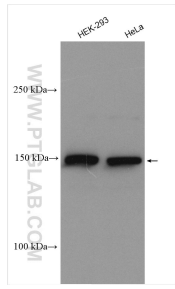
**Storage:**  
Store at -20°C. Stable for one year after shipment.  
**Storage Buffer:**  
PBS with 0.02% sodium azide and 50% glycerol pH 7.3.  
Aliquoting is unnecessary for -20°C storage

\*\*\* 20ul sizes contain 0.1% BSA

For technical support and original validation data for this product please contact:  
T: 1 (888) 4PTGLAB (1-888-478-4522) (toll free in USA), or 1(312) 455-8498 (outside USA)  
E: proteintech@ptglab.com  
W: ptglab.com

This product is exclusively available under Proteintech Group brand and is not available to purchase from any other manufacturer.

## Selected Validation Data



Various lysates were subjected to SDS PAGE followed by western blot with 24116-1-AP (RPAP1 antibody) at dilution of 1:6000 incubated at room temperature for 1.5 hours.