

For Research Use Only

SOD2 Polyclonal antibody

Catalog Number: 24127-1-AP **395 Publications**



Basic Information

Catalog Number: 24127-1-AP	GenBank Accession Number: BC016934	Purification Method: Antigen affinity purification
Size: 150ul , Concentration: 700 ug/ml by Nanodrop;	GeneID (NCBI): 6648	Recommended Dilutions: WB: 1:5000-1:50000
Source: Rabbit	UNIPROT ID: P04179	IP: 0.5-4.0 ug for 1.0-3.0 mg of total protein lysate
Isotype: IgG	Full Name: superoxide dismutase 2, mitochondrial	IHC: 1:500-1:2000
Immunogen Catalog Number: AG21388	Calculated MW: 25 kDa	IF/ICC: 1:200-1:800
	Observed MW: 25 kDa	

Applications

Tested Applications: WB, IHC, IF/ICC, IP, ELISA	Positive Controls:
Cited Applications: WB, IHC, IF, IP, CoIP, ELISA	WB : DU 145 cells, HEK-293 cells, HeLa cells, mouse brain tissue, rat brain tissue
Species Specificity: human, mouse, rat	IP : mouse brain tissue,
Cited Species: human, mouse, rat, pig, chicken, zebrafish, bovine, sheep, goat	IHC : human liver cancer tissue, human breast cancer tissue, human colon tissue
Note-IHC: suggested antigen retrieval with TE buffer pH 9.0; (*) Alternatively, antigen retrieval may be performed with citrate buffer pH 6.0	IF/ICC : HUVEC cells, HeLa cells

Background Information

SOD2(superoxide dismutase 2, mitochondrial) is also named as IPOB, MNSOD, SODM, Mn-SOD and belongs to the iron/manganese superoxide dismutase family. It is a marker of mitochondria, which is restricted to the perinuclear area in a cell with aggregate formation of mutant SOD1(PMID:12659845). It functions as the first line of antioxidant defense against highly reactive superoxide radicals and it appears to be early predictors for survival in septic patients with MIF(PMID:20863520). It has 2 isoforms with the molecular weight of 25 kDa and 21 kDa.

Notable Publications

Author	Pubmed ID	Journal	Application
Huidong Wang	36249770	Front Pharmacol	IF
Dan Tang	34815154	Phytomedicine	WB
Wen Zhang	31553975	Kidney Blood Press Res	WB

Storage

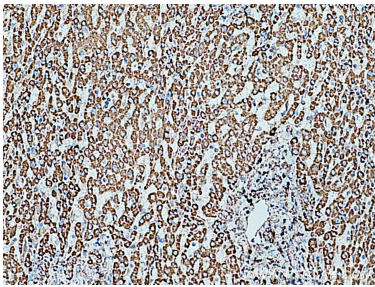
Storage:
Store at -20°C. Stable for one year after shipment.
Storage Buffer:
PBS with 0.02% sodium azide and 50% glycerol, pH7.3
Aliquoting is unnecessary for -20°C storage

*** 20ul sizes contain 0.1% BSA

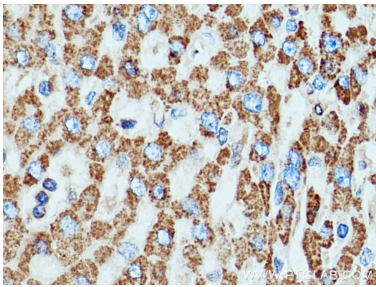
For technical support and original validation data for this product please contact:
T: 1 (888) 4PTGLAB (1-888-478-4522) (toll free in USA), or 1(312) 455-8498 (outside USA)
E: proteintech@ptglab.com
W: ptglab.com

This product is exclusively available under Proteintech Group brand and is not available to purchase from any other manufacturer.

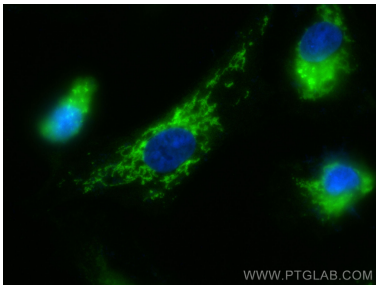
Selected Validation Data



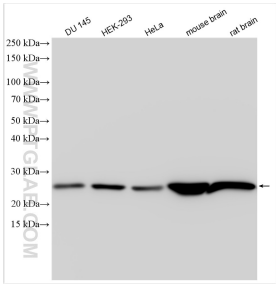
Immunohistochemical analysis of paraffin-embedded human liver cancer tissue slide using 24127-1-AP (SOD2 antibody) at dilution of 1:1000 (under 10x lens). Heat mediated antigen retrieval with Tris-EDTA buffer (pH 9.0).



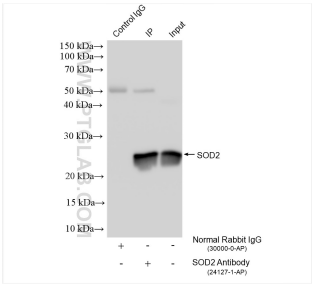
Immunohistochemical analysis of paraffin-embedded human liver cancer tissue slide using 24127-1-AP (SOD2 antibody) at dilution of 1:1000 (under 40x lens). Heat mediated antigen retrieval with Tris-EDTA buffer (pH 9.0).



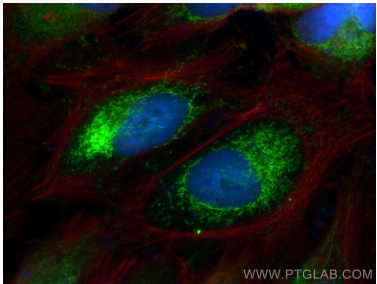
Immunofluorescent analysis of (-20°C Methanol) fixed HUVEC cells using SOD2 antibody (24127-1-AP) at dilution of 1:400 and CoraLite®488-Conjugated AffiniPure Goat Anti-Rabbit IgG(H+L) (SA00013-2).



Various lysates were subjected to SDS PAGE followed by western blot with 24127-1-AP (SOD2 antibody) at dilution of 1:10000 incubated at room temperature for 1.5 hours.



IP result of anti-SOD2 (IP:24127-1-AP, 4ug; Detection:24127-1-AP 1:10000) with mouse brain tissue lysate 1840 ug.



Immunofluorescent analysis of (4% PFA) fixed HeLa cells using SOD2 antibody (24127-1-AP) at dilution of 1:400 and Multi-rAb CoraLite® Plus 488-Goat Anti-Rabbit Recombinant Secondary Antibody (H+L) (RGAR002), CL594-Phalloidin (red).