

For Research Use Only

# PSMC3 Polyclonal antibody

Catalog Number: 24142-1-AP

4 Publications



## Basic Information

### Catalog Number:

24142-1-AP

### Size:

150ul, Concentration: 900 ug/ml by Nanodrop and 460 ug/ml by Bradford method using BSA as the standard;

### Source:

Rabbit

### Isotype:

IgG

### Immunogen Catalog Number:

AG21408

### GenBank Accession Number:

BC008713

### GeneID (NCBI):

5702

### UNIPROT ID:

P17980

### Full Name:

proteasome (prosome, macropain)  
26S subunit, ATPase, 3

### Calculated MW:

49 kDa

### Observed MW:

49 kDa

### Purification Method:

Antigen Affinity purified

### Recommended Dilutions:

WB 1:1000-1:8000

IP 0.5-4.0 ug for 1.0-3.0 mg of total protein lysate

IHC 1:20-1:200

IF/ICC 1:200-1:800

## Applications

### Tested Applications:

WB, IHC, IF/ICC, IP, ELISA

### Cited Applications:

WB

### Species Specificity:

human

### Cited Species:

human, mouse

### Positive Controls:

WB : HEK-293 cells, A431 cells, HeLa cells, HepG2 cells, Jurkat cells, MCF-7 cells, T-47D cells

IP : HeLa cells,

IHC : human ovary tumor tissue, human tonsillitis tissue

IF/ICC : HEK-293 cells,

**Note-IHC: suggested antigen retrieval with TE buffer pH 9.0; (\*) Alternatively, antigen retrieval may be performed with citrate buffer pH 6.0**

## Background Information

PSMC3(26S protease regulatory subunit 6A) is also named as TBP1, Proteasome 26S subunit ATPase 3 and belongs to the AAA ATPase family. The 26S protease is involved in the ATP-dependent degradation of ubiquitinated proteins. It is a multifunctional protein, component of the regulatory subunit of the proteasome, involved in different cellular processes.

## Notable Publications

Author	Pubmed ID	Journal	Application
Anna Maria Santoro	31797568	ChemMedChem	WB
Zhong-Qiu Yu	38776958	Hum Mol Genet	WB
Chaojun Yan	37589705	Elife	WB

## Storage

### Storage:

Store at -20°C. Stable for one year after shipment.

### Storage Buffer:

PBS with 0.02% sodium azide and 50% glycerol pH 7.3.

Aliquoting is unnecessary for -20°C storage

\*\*\* 20ul sizes contain 0.1% BSA

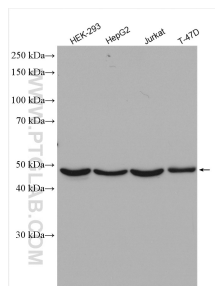
For technical support and original validation data for this product please contact:

T: 1 (888) 4PTGLAB (1-888-478-4522) (toll free in USA), or 1(312) 455-8498 (outside USA)

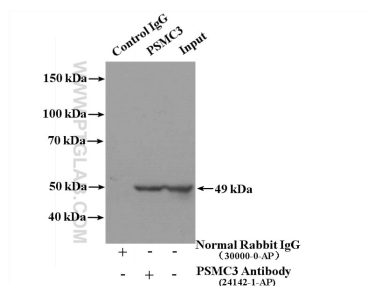
E: [proteintech@ptglab.com](mailto:proteintech@ptglab.com)  
W: [ptglab.com](http://ptglab.com)

This product is exclusively available under Proteintech Group brand and is not available to purchase from any other manufacturer.

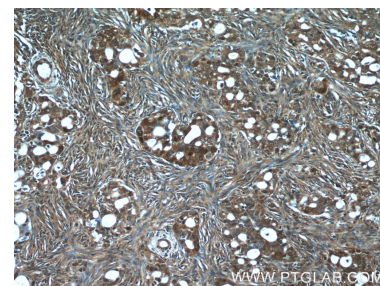
## Selected Validation Data



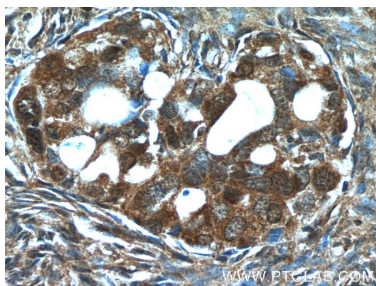
Various lysates were subjected to SDS PAGE followed by western blot with 24142-1-AP (PSMC3 antibody) at dilution of 1:4000 incubated at room temperature for 1.5 hours.



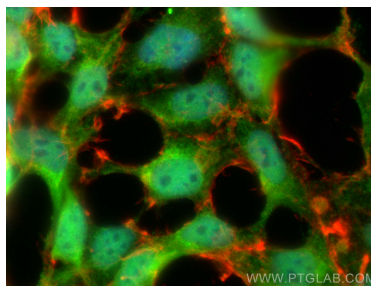
IP result of anti-PSMC3 (IP:24142-1-AP, 4ug; Detection:24142-1-AP 1:800) with HeLa cells lysate 3200ug.



Immunohistochemical analysis of paraffin-embedded human ovary tumor tissue slide using 24142-1-AP (PSMC3 Antibody) at dilution of 1:50 (under 10x lens).



Immunohistochemical analysis of paraffin-embedded human ovary tumor tissue slide using 24142-1-AP (PSMC3 Antibody) at dilution of 1:50 (under 40x lens).



Immunofluorescent analysis of (4% PFA) fixed HEK-293 cells using PSMC3 antibody (24142-1-AP) at dilution of 1:400 and CoraLite®488-Conjugated AffiniPure Goat Anti-Rabbit IgG(H+L) (SA00013-2), CL594-phalloidin (red).