

For Research Use Only

IL-27 Polyclonal antibody

Catalog Number: 24165-1-AP



Basic Information

Catalog Number:

24165-1-AP

Size:

150ul, Concentration: 800 ug/ml by Nanodrop and 487 ug/ml by Bradford method using BSA as the standard;

Source:

Rabbit

Isotype:

IgG

Immunogen Catalog Number:

AG21436

GenBank Accession Number:

BC062422

GeneID (NCBI):

246778

UNIPROT ID:

Q8NEV9

Full Name:

interleukin 27

Calculated MW:

243 aa, 27 kDa

Purification Method:

Antigen affinity purification

Recommended Dilutions:

IHC 1:20-1:200

Applications

Tested Applications:

IHC, ELISA

Species Specificity:

human

Note-IHC: suggested antigen retrieval with TE buffer pH 9.0; (*) Alternatively, antigen retrieval may be performed with citrate buffer pH 6.0

Positive Controls:

IHC : human liver cancer tissue,

Background Information

IL-27, as a member of the IL-6/IL-12 family, is a heterodimeric cytokine composed of two subunits: p28 (IL-27a) and EBI3 (IL-27b). IL-27 acts on various cell types, including T cells, B cells, macrophages, dendritic cells, natural killer (NK) cells and non-hematopoietic cells. IL-27 plays a critical role in the early regulation of T helper type 1 initiation, and enhances proliferation of naive CD4+T cells and naive B cells. It, however, also exerts anti-inflammatory functions by inhibiting the development of Th17 cells and inducing IL-10 producing type 1 regulatory T cells. IL-27 is a potentially promising cytokine for therapeutic approaches on various human diseases.

Storage

Storage:

Store at -20°C. Stable for one year after shipment.

Storage Buffer:

PBS with 0.02% sodium azide and 50% glycerol pH 7.3.

Aliquoting is unnecessary for -20°C storage

*** 20ul sizes contain 0.1% BSA

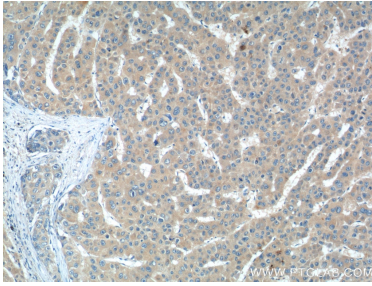
For technical support and original validation data for this product please contact:

T: 1 (888) 4PTGLAB (1-888-478-4522) (toll free in USA), or 1(312) 455-8498 (outside USA)

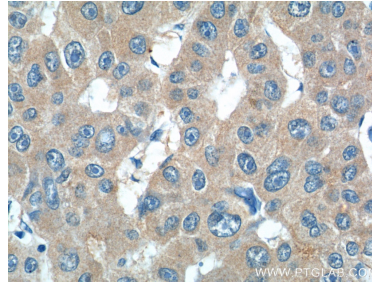
E: proteintech@ptglab.com
W: ptglab.com

This product is exclusively available under Proteintech Group brand and is not available to purchase from any other manufacturer.

Selected Validation Data



Immunohistochemical analysis of paraffin-embedded human liver cancer tissue slide using 24165-1-AP (IL-27 antibody at dilution of 1:50 (under 10x lens).



Immunohistochemical analysis of paraffin-embedded human liver cancer tissue slide using 24165-1-AP (IL-27 antibody at dilution of 1:50 (under 40x lens).