

For Research Use Only

MBL Polyclonal antibody

Catalog Number: 24207-1-AP

Featured Product

7 Publications



Basic Information

Catalog Number:

24207-1-AP

Size:

150ul, Concentration: 500 ug/ml by Nanodrop and 307 ug/ml by Bradford method using BSA as the standard;

Source:

Rabbit

Isotype:

IgG

Immunogen Catalog Number:

AG21508

GenBank Accession Number:

BC069338

GeneID (NCBI):

4153

UNIPROT ID:

P11226

Full Name:

mannose-binding lectin (protein C) 2, soluble (opsonic defect)

Calculated MW:

248 aa, 26 kDa

Observed MW:

32 kDa

Purification Method:

Antigen affinity purification

Recommended Dilutions:

WB: 1:500-1:2000

IHC: 1:200-1:800

Applications

Tested Applications:

WB, IHC, ELISA

Cited Applications:

WB, IHC, IF

Species Specificity:

human

Cited Species:

human, rat

Positive Controls:

WB : human blood tissue,

IHC : human liver tissue,

Note-IHC: suggested antigen retrieval with TE buffer pH 9.0; (*) Alternatively, antigen retrieval may be performed with citrate buffer pH 6.0

Notable Publications

Author	Pubmed ID	Journal	Application
Ying Zhuang	35796020	Oncol Rep	WB,IHC
Anika Alberts	32286427	Sci Rep	WB
Jin Li	39792656	Adv Sci (Weinh)	IF

Storage

Storage:

Store at -20°C. Stable for one year after shipment.

Storage Buffer:

PBS with 0.02% sodium azide and 50% glycerol, pH7.3

Aliquoting is unnecessary for -20°C storage

*** 20ul sizes contain 0.1% BSA

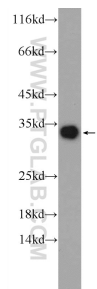
For technical support and original validation data for this product please contact:

T: 1 (888) 4PTGLAB (1-888-478-4522) (toll free in USA), or 1(312) 455-8498 (outside USA)

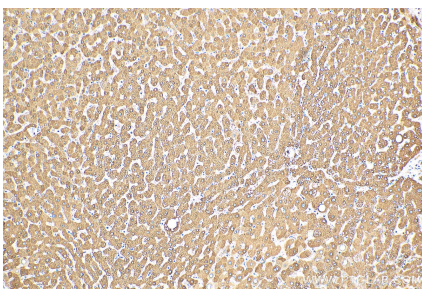
E: proteintech@ptglab.com
W: ptglab.com

This product is exclusively available under Proteintech Group brand and is not available to purchase from any other manufacturer.

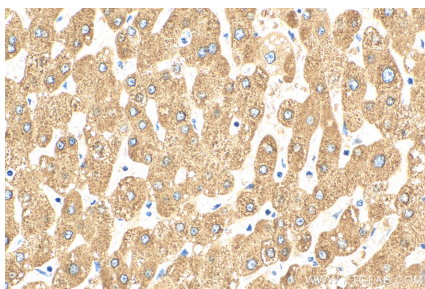
Selected Validation Data



human blood was subjected to SDS PAGE followed by western blot with 24207-1-AP (MBL antibody) at dilution of 1:1000 incubated at room temperature for 1.5 hours.



Immunohistochemical analysis of paraffin-embedded human liver tissue slide using 24207-1-AP (MBL antibody) at dilution of 1:400 (under 10x lens). Heat mediated antigen retrieval with Tris-EDTA buffer (pH 9.0).



Immunohistochemical analysis of paraffin-embedded human liver tissue slide using 24207-1-AP (MBL antibody) at dilution of 1:400 (under 40x lens). Heat mediated antigen retrieval with Tris-EDTA buffer (pH 9.0).