

For Research Use Only

# COA6 Polyclonal antibody

Catalog Number: 24209-1-AP

Featured Product

3 Publications



## Basic Information

<b>Catalog Number:</b> 24209-1-AP	<b>GenBank Accession Number:</b> BC116455	<b>Purification Method:</b> Antigen Affinity purified
<b>Size:</b> 150ul , Concentration: 350 µg/ml by Nanodrop and 220 µg/ml by Bradford method using BSA as the standard;	<b>GeneID (NCBI):</b> 388753	<b>Recommended Dilutions:</b> WB 1:500-1:2000 IP 0.5-4.0 ug for 1.0-3.0 mg of total protein lysate IHC 1:500-1:2000
<b>Source:</b> Rabbit	<b>Full Name:</b> chromosome 1 open reading frame 31	
<b>Isotype:</b> IgG	<b>Calculated MW:</b> 125 aa, 14 kDa	
<b>Immunogen Catalog Number:</b> AG21525	<b>Observed MW:</b> 10 - 18 kDa	

## Applications

<b>Tested Applications:</b> IHC, IP, WB, ELISA	<b>Positive Controls:</b> WB : HEK-293 cells, mouse liver tissue IP : HEK-293 cells, IHC : human kidney tissue,
<b>Cited Applications:</b> IF, WB	
<b>Species Specificity:</b> human, mouse	
<b>Cited Species:</b> human	

**Note-IHC: suggested antigen retrieval with TE buffer pH 9.0; (\*) Alternatively, antigen retrieval may be performed with citrate buffer pH 6.0**

## Background Information

C1orf31, also known as COA6, is a conserved mitochondrial protein required for respiratory complex IV biogenesis. Recently study reported that C1orf31 is required for maintenance of cytochrome c oxidase (CcO) subunit levels, and has role in the Cu delivery pathway to CcO. Defects in C1orf31 is associated with mitochondrial respiratory chain disease (MRCD). (24549041)

## Notable Publications

Author	Pubmed ID	Journal	Application
Alok Ghosh	24549041	Hum Mol Genet	WB
Ming Zhang	36982777	Int J Mol Sci	WB,IF
Shivatheja Soma	31851937	Cell Rep	WB

## Storage

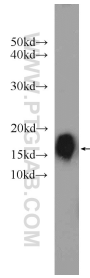
**Storage:**  
Store at -20°C. Stable for one year after shipment.  
**Storage Buffer:**  
PBS with 0.02% sodium azide and 50% glycerol pH 7.3.  
Aliquoting is unnecessary for -20°C storage

\*\*\* 20ul sizes contain 0.1% BSA

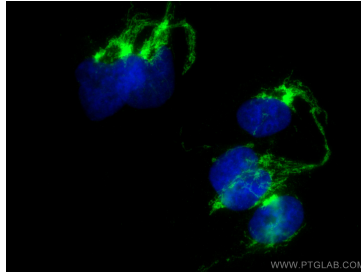
For technical support and original validation data for this product please contact:  
T: 1 (888) 4PTGLAB (1-888-478-4522) (toll free in USA), or 1(312) 455-8498 (outside USA)  
E: proteintech@ptglab.com  
W: ptglab.com

This product is exclusively available under Proteintech Group brand and is not available to purchase from any other manufacturer.

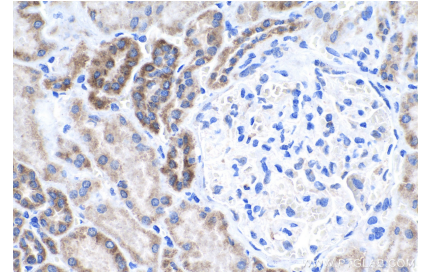
## Selected Validation Data



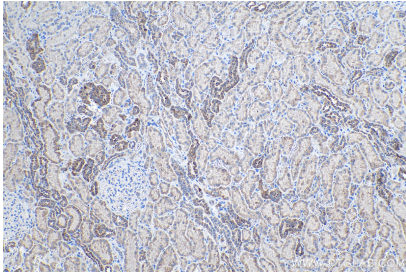
HEK-293 cells were subjected to SDS PAGE followed by western blot with 24209-1-AP (COA6 antibody) at dilution of 1:1000 incubated at room temperature for 1.5 hours.



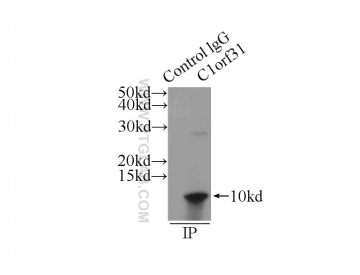
Immunofluorescent analysis of (4% PFA) fixed HEK-293 cells using C1orf31 antibody (24209-1-AP) at dilution of 1:200 and Coralite®488-Conjugated AffiniPure Goat Anti-Rabbit IgG(H+L).



Immunohistochemical analysis of paraffin-embedded human kidney tissue slide using 24209-1-AP (COA6 antibody) at dilution of 1:1000 (under 40x lens). Heat mediated antigen retrieval with Tris-EDTA buffer (pH 9.0).



Immunohistochemical analysis of paraffin-embedded human kidney tissue slide using 24209-1-AP (COA6 antibody) at dilution of 1:1000 (under 10x lens). Heat mediated antigen retrieval with Tris-EDTA buffer (pH 9.0).



IP Result of anti-COA6 (IP:24209-1-AP, 4ug; Detection:24209-1-AP 1:500) with HEK-293 cells lysate 1760ug.