

For Research Use Only

TAF15 Polyclonal antibody

Catalog Number: 24235-1-AP

Featured Product

3 Publications



Basic Information

Catalog Number: 24235-1-AP	GenBank Accession Number: BC046099	Purification Method: Antigen Affinity purified
Size: 150ul, Concentration: 800 ug/ml by Nanodrop;	GeneID (NCBI): 8148	Recommended Dilutions: WB 1:500-1:2000
Source: Rabbit	UNIPROT ID: Q92804	IHC 1:250-1:1000
Isotype: IgG	Full Name: TAF15 RNA polymerase II, TATA box binding protein (TBP)-associated factor, 68kDa	IF/ICC 1:200-1:800
Immunogen Catalog Number: AG20828	Calculated MW: 592 aa, 62 kDa	
	Observed MW: 68 kDa	

Applications

Tested Applications: WB, IHC, IF/ICC, ELISA	Positive Controls: WB : HEK-293 cells, HeLa cells
Cited Applications: WB, IHC, RIP	IHC : human cervical cancer tissue, human kidney tissue, human malignant melanoma tissue
Species Specificity: human	IF/ICC : HeLa cells,
Cited Species: human, mouse	

Note-IHC: suggested antigen retrieval with TE buffer pH 9.0; (*) Alternatively, antigen retrieval may be performed with citrate buffer pH 6.0

Background Information

TAF15 (TAF2N or TAFII68) is a nuclear protein known to associate with a distinct subpopulation of transcription factor IID (TFIID), a multi-subunit complex that nucleates the pre-initiation complex on promoters of on protein-coding genes. TAF15 harbors a transcriptional activation domain, a RNA recognition motif and many Arg-Gly-Gly repeats that participate in RNA binding. TAF15 along with FUS and EWS constitutes the FET (FUS/EWS/TAF15) protein family of heterogeneous nuclear ribonucleoproteins (hnRNPs) class of RNA binding proteins that are multifunctional proteins implicated in numerous aspects of RNA processing/functions. TAF15 is a nuclear protein that shuttle between cytoplasm-nucleus and as RNA/ssDNA-binding protein, it play specific roles during transcription initiation at distinct promoters and enter the preinitiation complex together with the RNA polymerase II. TAF15 as well as other FET member genes are frequently translocated in sarcomas and rare hematopoietic as well as epithelial cancers. Moreover, dominant mutations in genes coding for four hnRNPs (TDP-43, FUS/TLS, TAF15, and EWS) are found in familial and sporadic cases of ALS and a chromosomal aberration involving TAF15/TAF2N is found in a form of extraskelatal myxoid chondrosarcomas (EMC).

Notable Publications

Author	Pubmed ID	Journal	Application
Dalu Wang	34868956	Front Oncol	WB,RIP
Xuetong Wang	39438489	Nat Commun	RIP
Shude Yang	38878223	Mol Cell Biochem	WB,IHC

Storage

Storage:
Store at -20°C. Stable for one year after shipment.
Storage Buffer:
PBS with 0.02% sodium azide and 50% glycerol pH 7.3.
Aliquoting is unnecessary for -20°C storage

***** 20ul sizes contain 0.1% BSA**

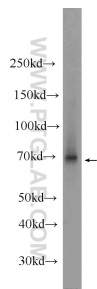
For technical support and original validation data for this product please contact:

T: 1 (888) 4PTGLAB (1-888-478-4522) (toll free in USA), or 1(312) 455-8498 (outside USA)

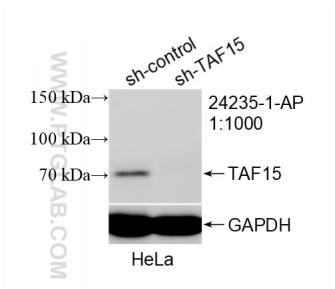
E: proteintech@ptglab.com
W: ptglab.com

This product is exclusively available under Proteintech Group brand and is not available to purchase from any other manufacturer.

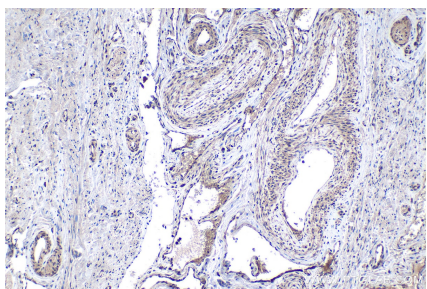
Selected Validation Data



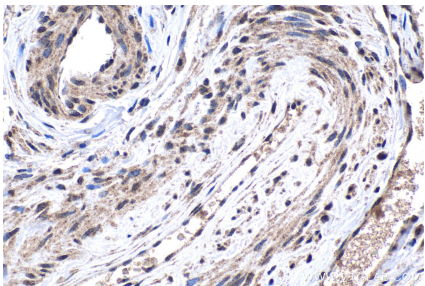
HEK-293 cells were subjected to SDS PAGE followed by western blot with 24235-1-AP (TAF15 Antibody) at dilution of 1:1000 incubated at room temperature for 1.5 hours.



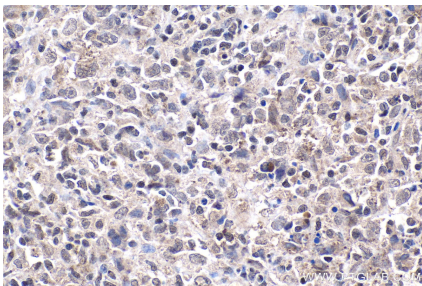
WB result of TAF15 antibody (24235-1-AP; 1:1000; incubated at room temperature for 1.5 hours) with sh-Control and sh-TAF15 transfected HeLa cells.



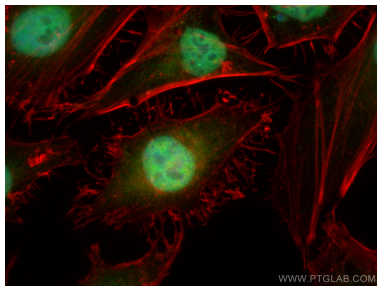
Immunohistochemical analysis of paraffin-embedded human cervical cancer tissue slide using 24235-1-AP (TAF15 antibody) at dilution of 1:500 (under 10x lens). Heat mediated antigen retrieval with Tris-EDTA buffer (pH 9.0).



Immunohistochemical analysis of paraffin-embedded human cervical cancer tissue slide using 24235-1-AP (TAF15 antibody) at dilution of 1:500 (under 40x lens). Heat mediated antigen retrieval with Tris-EDTA buffer (pH 9.0).



Immunohistochemical analysis of paraffin-embedded human malignant melanoma tissue slide using 24235-1-AP (TAF15 antibody) at dilution of 1:500 (under 40x lens). Heat mediated antigen retrieval with Tris-EDTA buffer (pH 9.0).



Immunofluorescent analysis of (4% PFA) fixed HeLa cells using TAF15 antibody (24235-1-AP) at dilution of 1:400 and CoraLite®488-Conjugated AffiniPure Goat Anti-Rabbit IgG(H+L) (SA00013-2), CL594-phalloidin (red).