

For Research Use Only

MEFV Polyclonal antibody

Catalog Number: 24280-1-AP **7 Publications**



Basic Information

Catalog Number:

24280-1-AP

Size:

150ul, Concentration: 500 ug/ml by Nanodrop and 493 ug/ml by Bradford method using BSA as the standard;

Source:

Rabbit

Isotype:

IgG

Immunogen Catalog Number:

AG18000

GenBank Accession Number:

BC101511

GeneID (NCBI):

4210

UNIPROT ID:

O15553

Full Name:

Mediterranean fever

Calculated MW:

781 aa, 86 kDa

Observed MW:

86 kDa

Purification Method:

Antigen affinity purification

Recommended Dilutions:

WB 1:1000-1:5000

IP 0.5-4.0 ug for 1.0-3.0 mg of total protein lysate

IF/ICC 1:200-1:800

Applications

Tested Applications:

WB, IF/ICC, FC (Intra), IP, ELISA

Cited Applications:

WB, IF, IP

Species Specificity:

human

Cited Species:

human, mouse, rat

Positive Controls:

WB : THP-1 cells, human plasma

IP : THP-1 cells,

IF/ICC : A431 cells,

Background Information

MEFV, a gene encoding a protein of unknown function, is the genetic cause of Familial Mediterranean fever (FMF), a recessively inherited disorder characterized by recurring attacks of fever and serositis. Recently mutation of MEFV has been reported to cause autoinflammatory disease distinct from FMF.

Notable Publications

Author	Pubmed ID	Journal	Application
Matthew S J Mangan	36342970	PLoS Biol	FC
Xin Jin	31410136	Exp Ther Med	IF
Nivedita Hegdekar	36652438	Autophagy	WB,IP

Storage

Storage:

Store at -20°C. Stable for one year after shipment.

Storage Buffer:

PBS with 0.02% sodium azide and 50% glycerol pH 7.3.

Aliquoting is unnecessary for -20°C storage

*** 20ul sizes contain 0.1% BSA

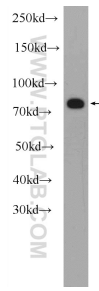
For technical support and original validation data for this product please contact:

T: 1 (888) 4PTGLAB (1-888-478-4522) (toll free in USA), or 1(312) 455-8498 (outside USA)

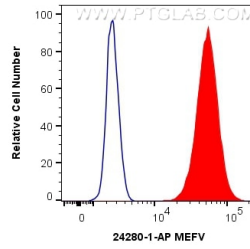
E: proteintech@ptglab.com
W: ptglab.com

This product is exclusively available under Proteintech Group brand and is not available to purchase from any other manufacturer.

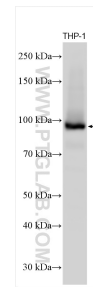
Selected Validation Data



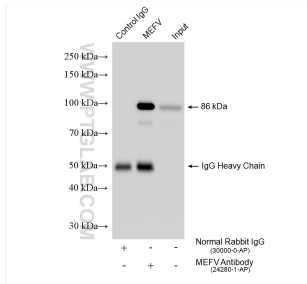
human plasma were subjected to SDS PAGE followed by western blot with 24280-1-AP (MEFV Antibody) at dilution of 1:1000 incubated at room temperature for 1.5 hours.



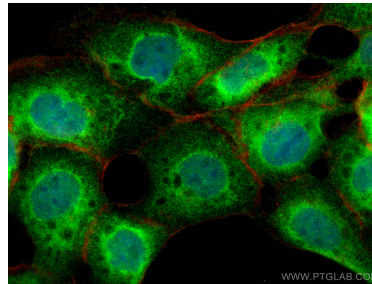
1×10^6 A431 cells were intracellularly stained with 0.4 μ g Anti-Human MEFV (24280-1-AP) and CoraLite[®]488-Conjugated Goat Anti-Rabbit IgG(H+L) at dilution 1:1000 (red), or 0.4 μ g Isotype Control. Cells were fixed and permeabilized with Transcription Factor Staining Buffer Kit (PF00011).



THP-1 cells were subjected to SDS PAGE followed by western blot with 24280-1-AP (MEFV antibody) at dilution of 1:2500 incubated at room temperature for 1.5 hours.



IP result of anti-MEFV (IP:24280-1-AP, 4 μ g; Detection:24280-1-AP 1:5000) with THP-1 cells lysate 1820 μ g.



Immunofluorescent analysis of (4% PFA) fixed A431 cells using MEFV antibody (24280-1-AP) at dilution of 1:400 and CoraLite[®]488-Conjugated Goat Anti-Rabbit IgG(H+L), CL594-phalloidin (red).