

For Research Use Only

PAPOLG Polyclonal antibody

Catalog Number: 24284-1-AP



Basic Information

Catalog Number: 24284-1-AP	GenBank Accession Number: BC111701	Purification Method: Antigen affinity purification
Size: 150ul , Concentration: 750 µg/ml by Nanodrop and 367 µg/ml by Bradford method using BSA as the standard;	GeneID (NCBI): 64895	Recommended Dilutions: WB 1:500-1:2000 IP 0.5-4.0 ug for IP and 1:500-1:2000 for WB
Source: Rabbit	Full Name: poly(A) polymerase gamma	IHC 1:20-1:200
Isotype: IgG	Calculated MW: 736 aa, 83 kDa	IF 1:50-1:500
Immunogen Catalog Number: AG16208	Observed MW: 83 kDa	

Applications

Tested Applications: IF, IHC, IP, WB, ELISA	Positive Controls: WB : HeLa cells, MCF-7 cells
Species Specificity: human	IP : HeLa cells,
Note-IHC: suggested antigen retrieval with TE buffer pH 9.0; (*) Alternatively, antigen retrieval may be performed with citrate buffer pH 6.0	IHC : human testis tissue,
	IF : HeLa cells,

Background Information

PAPOLG, also named as Neo-poly(A) polymerase or Polynucleotide adenylyltransferase gamma, is a 736 amino acid protein, which belongs to the poly(A) polymerase family. PAPOLG is expressed predominantly in testis, and weakly in other tissues. PAPOLG is responsible for the post-transcriptional adenylation of the 3'-terminal of mRNA precursors and several small RNAs including signal recognition particle (SRP) RNA, nuclear 7SK RNA, U2 small nuclear RNA, and ribosomal 5S RNA.

Storage

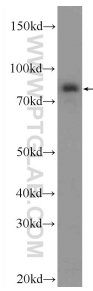
Storage:
Store at -20°C. Stable for one year after shipment.
Storage Buffer:
PBS with 0.02% sodium azide and 50% glycerol pH 7.3.
Aliquoting is unnecessary for -20°C storage

*** 20ul sizes contain 0.1% BSA

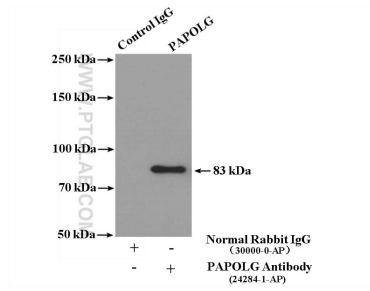
For technical support and original validation data for this product please contact:
T: 1 (888) 4PTGLAB (1-888-478-4522) (toll free in USA), or 1(312) 455-8498 (outside USA)
E: proteintech@ptglab.com
W: ptglab.com

This product is exclusively available under Proteintech Group brand and is not available to purchase from any other manufacturer.

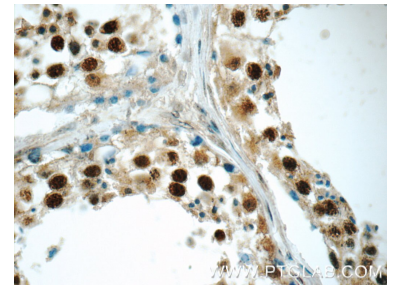
Selected Validation Data



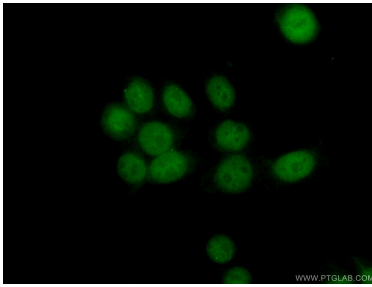
HeLa cells were subjected to SDS PAGE followed by western blot with 24284-1-AP (PAPOLG Antibody) at dilution of 1:1000 incubated at room temperature for 1.5 hours.



IP Result of anti-PAPOLG (IP:24284-1-AP, 4ug; Detection:24284-1-AP 1:1000) with HeLa cells lysate 3200ug.



Immunohistochemical analysis of paraffin-embedded human testis tissue slide using 24284-1-AP (PAPOLG Antibody) at dilution of 1:50 (under 40x lens).



Immunofluorescent analysis of (10% Formaldehyde) fixed HeLa cells using 24284-1-AP (PAPOLG antibody) at dilution of 1:50 and Alexa Fluor 488-conjugated AffiniPure Goat Anti-Rabbit IgG(H+L).