

For Research Use Only

EEPD1 Polyclonal antibody

Catalog Number: 24310-1-AP



Basic Information

Catalog Number: 24310-1-AP	GenBank Accession Number: BC065518	Purification Method: Antigen affinity purification
Size: 150ul , Concentration: 600 µg/ml by Nanodrop;	GeneID (NCBI): 80820	Recommended Dilutions: WB 1:2000-1:10000
Source: Rabbit	Full Name: endonuclease/exonuclease/phosphatase family domain containing 1	
Isotype: IgG	Calculated MW: 569 aa, 62 kDa	
Immunogen Catalog Number: AG19423	Observed MW: 63 kDa	

Applications

Tested Applications: WB, ELISA	Positive Controls: WB : COLO 320 cells, PC-3 cells
Species Specificity: human, mouse	

Background Information

EEPD1, also known as KIAA1706, is a 198 amino-acid protein belonging to the endonuclease/exonuclease/phosphatase family domain containing 11. EEPD1 is localized in the cell nucleus and may be involved in the splicing of DNA. The function of EEPD1 is still unknown and needs to be further studied.

Storage

Storage:
Store at -20°C. Stable for one year after shipment.
Storage Buffer:
PBS with 0.02% sodium azide and 50% glycerol pH 7.3.
Aliquoting is unnecessary for -20°C storage

*** 20ul sizes contain 0.1% BSA

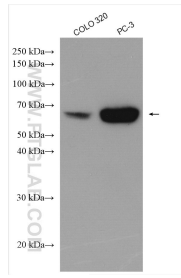
For technical support and original validation data for this product please contact:

T: 1 (888) 4PTGLAB (1-888-478-4522) (toll free in USA), or 1(312) 455-8498 (outside USA)

E: proteintech@ptglab.com
W: ptglab.com

This product is exclusively available under Proteintech Group brand and is not available to purchase from any other manufacturer.

Selected Validation Data



Various lysates were subjected to SDS PAGE followed by western blot with 24310-1-AP (EEDP1 antibody) at dilution of 1:5000 incubated at room temperature for 1.5 hours.