

For Research Use Only

LYSMD3 Polyclonal antibody

Catalog Number: 24313-1-AP

Featured Product

3 Publications



Basic Information

Catalog Number:

24313-1-AP

Size:

150ul, Concentration: 440 ug/ml by Bradford method using BSA as the standard;

Source:

Rabbit

Isotype:

IgG

Immunogen Catalog Number:

AG19430

GenBank Accession Number:

BC136741

GeneID (NCBI):

116068

UNIPROT ID:

Q7Z3D4

Full Name:

LysM, putative peptidoglycan-binding, domain containing 3

Calculated MW:

306 aa, 35 kDa

Observed MW:

35 kDa

Purification Method:

Antigen affinity purification

Recommended Dilutions:

WB: 1:1000-1:5000

IHC: 1:50-1:500

Applications

Tested Applications:

WB, IHC, ELISA

Cited Applications:

WB

Species Specificity:

human, mouse

Cited Species:

human

Positive Controls:

WB: Neuro-2a cells,

IHC: human liver tissue,

Note-IHC: suggested antigen retrieval with TE buffer pH 9.0; (*) Alternatively, antigen retrieval may be performed with citrate buffer pH 6.0

Background Information

LYSMD3 also termed as LysM and putative peptidoglycan binding domain containing protein 3 is a 306 amino acid single-pass membrane protein that contains one LysM repeat. LysM domain encoding genes may play a role in brain and in nervous system development and functioning. LYSMD3, shows a high level of central nervous expression during embryogenesis and is also, therefore, a good candidate gene for other central nervous system (CNS) symptoms, such as psychomotor retardation, brain anomalies and muscular hypotonia of the 5q14.3 microdeletion syndrome.

Notable Publications

Author	Pubmed ID	Journal	Application
Christine C Yokoyama	29496999	J Biol Chem	
Xin He	34289364	Cell Rep	WB
Yevgeniy V Serebrenik	29851555	Mol Biol Cell	WB

Storage

Storage:

Store at -20°C. Stable for one year after shipment.

Storage Buffer:

PBS with 0.02% sodium azide and 50% glycerol, pH7.3

Aliquoting is unnecessary for -20°C storage

*** 20ul sizes contain 0.1% BSA

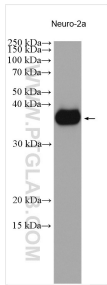
For technical support and original validation data for this product please contact:

T: 1 (888) 4PTGLAB (1-888-478-4522) (toll free in USA), or 1(312) 455-8498 (outside USA)

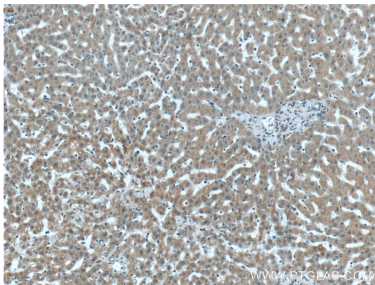
E: proteintech@ptglab.com
W: ptglab.com

This product is exclusively available under Proteintech Group brand and is not available to purchase from any other manufacturer.

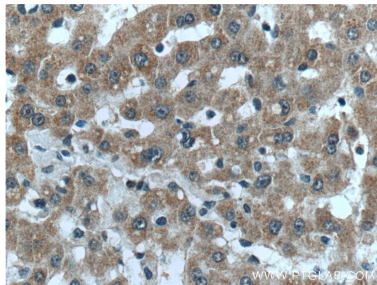
Selected Validation Data



Neuro-2a cells were subjected to SDS PAGE followed by western blot with 24313-1-AP (LYSMD3 antibody) at dilution of 1:2500 incubated at room temperature for 1.5 hours.



Immunohistochemical analysis of paraffin-embedded human liver tissue slide using 24313-1-AP (LYSMD3 Antibody) at dilution of 1:200 (under 10x lens).



Immunohistochemical analysis of paraffin-embedded human liver tissue slide using 24313-1-AP (LYSMD3 Antibody) at dilution of 1:200 (under 40x lens).