

For Research Use Only

ATG16L2 Polyclonal antibody

Catalog Number: 24322-1-AP **1 Publications**



Basic Information

Catalog Number: 24322-1-AP	GenBank Accession Number: BC137490	Purification Method: Antigen affinity purification
Size: 150ul , Concentration: 550 µg/ml by Nanodrop and 333 µg/ml by Bradford method using BSA as the standard;	GeneID (NCBI): 89849	Recommended Dilutions: WB 1:500-1:2000 IP 0.5-4.0 ug for IP and 1:500-1:1000
Source: Rabbit	Full Name: ATG16 autophagy related 16-like 2 (S. cerevisiae)	for WB IF 1:50-1:500
Isotype: IgG	Calculated MW: 619 aa, 69 kDa	
Immunogen Catalog Number: AG19399	Observed MW: 70 kDa, 30 kDa	

Applications

Tested Applications: IF, IP, WB, ELISA	Positive Controls:
Cited Applications: WB	WB: mouse spleen tissue, mouse testis tissue
Species Specificity: human, mouse	IP: mouse testis tissue,
Cited Species: mouse	IF: MCF-7 cells,

Background Information

ATG16L2 also named as Autophagy related protein 16-2 is a 619 amino-acid protein, Which belongs to the WD repeat ATG16 family. ATG16L2 contains 7 WD repeats and localizes in the cytoplasm. There are three isoforms of ATG16L2 and the molecular weight of three isoform is respectively 69kDa, 56kDa and 31kDa. ATG16L2 may play a role in autophagy.

Notable Publications

Author	Pubmed ID	Journal	Application
Trieu-Duc Vu	35504437	Gene	WB

Storage

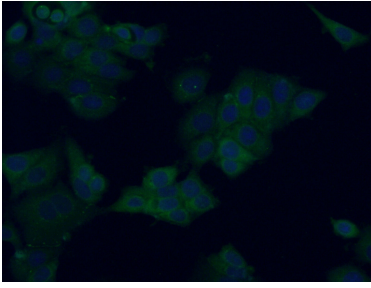
Storage:
Store at -20°C. Stable for one year after shipment.
Storage Buffer:
PBS with 0.02% sodium azide and 50% glycerol pH 7.3.
Aliquoting is unnecessary for -20°C storage

*** 20ul sizes contain 0.1% BSA

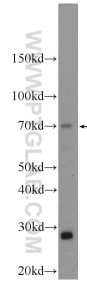
For technical support and original validation data for this product please contact:
T: 1 (888) 4PTGLAB (1-888-478-4522) (toll free in USA), or 1(312) 455-8498 (outside USA)
E: proteintech@ptglab.com
W: ptglab.com

This product is exclusively available under Proteintech Group brand and is not available to purchase from any other manufacturer.

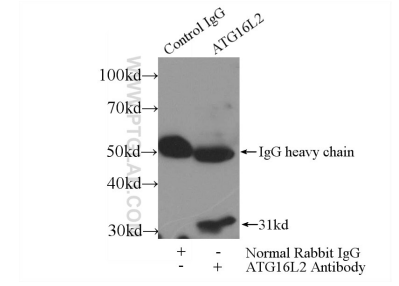
Selected Validation Data



Immunofluorescent analysis of (-20°C Ethanol) fixed MCF-7 cells using 24322-1-AP (ATG16L2 antibody) at dilution of 1:50 and Alexa Fluor 488-Conjugated AffiniPure Goat Anti-Rabbit IgG(H+L).



mouse spleen tissue were subjected to SDS PAGE followed by western blot with 24322-1-AP (ATG16L2 Antibody) at dilution of 1:1000 incubated at room temperature for 1.5 hours.



IP Result of anti-ATG16L2 (IP:24322-1-AP, 3ug; Detection:24322-1-AP 1:700) with mouse testis tissue lysate 4800ug.