

For Research Use Only

IFT43 Polyclonal antibody

Catalog Number: 24338-1-AP

5 Publications



Basic Information

Catalog Number:

24338-1-AP

Size:

150ul, Concentration: 1000 ug/ml by Nanodrop and 547 ug/ml by Bradford method using BSA as the standard;

Source:

Rabbit

Isotype:

IgG

Immunogen Catalog Number:

AG19434

GenBank Accession Number:

BC010436

GeneID (NCBI):

112752

UNIPROT ID:

Q96FT9

Full Name:

chromosome 14 open reading frame

179

Calculated MW:

213 aa, 24 kDa

Purification Method:

Antigen affinity purification

Recommended Dilutions:

IHC 1:20-1:200

IF/ICC 1:200-1:800

Applications

Tested Applications:

IHC, IF/ICC, ELISA

Cited Applications:

WB, IF

Species Specificity:

human, canine

Cited Species:

human, mouse

Note-IHC: suggested antigen retrieval with TE buffer pH 9.0; (*) Alternatively, antigen retrieval may be performed with citrate buffer pH 6.0

Positive Controls:

IHC : human testis tissue,

IF/ICC : MDCK cells, hTERT-RPE1 cells

Background Information

IFT43, encoded by C14ORF179, is a subunit of the intraflagellar transport complex A (IFT-A) of primary cilia. The IFT-A is implicated in retrograde ciliary transport along axonemal microtubules. Defects in subunits of IFT-A has been associated with skeletal ciliopathies, including Sensenbrenner syndrome, Jeune syndrome, and Ellis-van-Creveld syndrome. Mutations in C14ORF179 has been linked to Sensenbrenner syndrome. (21378380)

Notable Publications

Author	Pubmed ID	Journal	Application
Laura Vuolo	30320547	Elife	IF
Jack M Shireman	33855339	Brain	WB
Caleb S Hayes	31188487	J Cell Physiol	WB

Storage

Storage:

Store at -20°C. Stable for one year after shipment.

Storage Buffer:

PBS with 0.02% sodium azide and 50% glycerol pH 7.3.

Aliquoting is unnecessary for -20°C storage

*** 20ul sizes contain 0.1% BSA

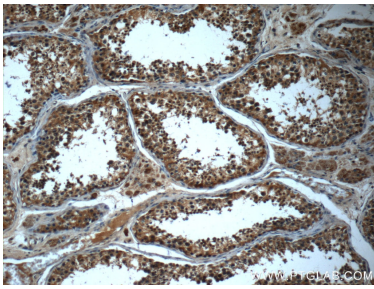
For technical support and original validation data for this product please contact:

T: 1 (888) 4PTGLAB (1-888-478-4522) (toll free in USA), or 1(312) 455-8498 (outside USA)

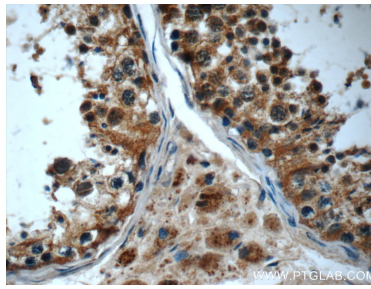
E: proteintech@ptglab.com
W: ptglab.com

This product is exclusively available under Proteintech Group brand and is not available to purchase from any other manufacturer.

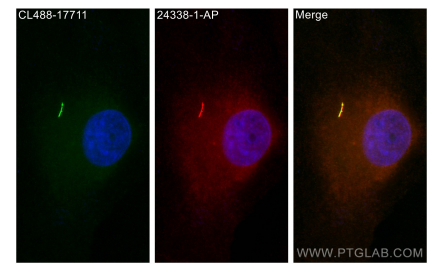
Selected Validation Data



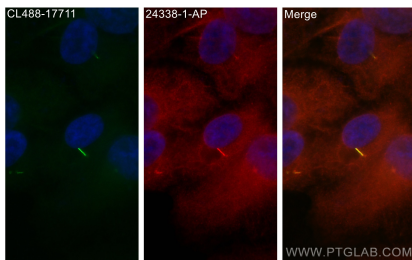
Immunohistochemical analysis of paraffin-embedded human testis slide using 24338-1-AP (IFT43 antibody at dilution of 1:50 (under 10x lens).



Immunohistochemical analysis of paraffin-embedded human testis slide using 24338-1-AP (IFT43 antibody at dilution of 1:50 (under 40x lens).



Immunofluorescent analysis of (-20°C Methanol) fixed MDCK cells using IFT43 antibody (24338-1-AP) at dilution of 1:400 and CoraLite® 594-Conjugated Goat Anti-Rabbit IgG(H+L), CoraLite® Plus 488 ARL13B antibody (CL488-17711, green).



Immunofluorescent analysis of (-20°C Methanol) fixed hTERT-RPE1 cells using IFT43 antibody (24338-1-AP) at dilution of 1:400 and CoraLite® 594-Conjugated Goat Anti-Rabbit IgG(H+L), CoraLite® Plus 488 ARL13B antibody (CL488-17711, green).