

For Research Use Only

# Cadherin-17 Polyclonal antibody

Catalog Number: 24339-1-AP

5 Publications



## Basic Information

### Catalog Number:

24339-1-AP

### Size:

150ul, Concentration: 700 ug/ml by Nanodrop and 407 ug/ml by Bradford method using BSA as the standard;

### Source:

Rabbit

### Isotype:

IgG

### Immunogen Catalog Number:

AG19488

### GenBank Accession Number:

BC113464

### GeneID (NCBI):

1015

### UNIPROT ID:

Q12864

### Full Name:

cadherin 17, LI cadherin (liver-intestine)

### Calculated MW:

832 aa, 92 kDa

### Observed MW:

120 kDa

### Purification Method:

Antigen affinity purification

### Recommended Dilutions:

WB 1:5000-1:50000

IHC 1:200-1:800

## Applications

### Tested Applications:

WB, IHC, ELISA

### Cited Applications:

WB, IHC, IF, IP

### Species Specificity:

human, mouse

### Cited Species:

human

**Note-IHC: suggested antigen retrieval with TE buffer pH 9.0; (\*) Alternatively, antigen retrieval may be performed with citrate buffer pH 6.0**

### Positive Controls:

WB : mouse colon tissue, mouse small intestine tissue

IHC : human colon cancer tissue, human colon tissue, human stomach cancer tissue, mouse colon tissue

## Background Information

Cadherin-17, also known as LI-cadherin, is a member of the cadherin superfamily. Cadherins are transmembrane proteins that mediate cell-cell adhesion, play important roles during embryogenesis, and are crucial for tissue morphogenesis and maintenance. Cadherin-17 is a component of the gastrointestinal tract and pancreatic ducts and is involved in intestinal peptide transport. It may also play a role in the morphological organization of liver and intestine.

## Notable Publications

Author	Pubmed ID	Journal	Application
Yanmei Zhang	32579167	Jpn J Clin Oncol	IHC
Norihiro Kotani	36152751	J Biol Chem	WB
Ethan V Abel	30074477	Elife	WB

## Storage

### Storage:

Store at -20°C. Stable for one year after shipment.

### Storage Buffer:

PBS with 0.02% sodium azide and 50% glycerol pH 7.3.

Aliquoting is unnecessary for -20°C storage

\*\*\* 20ul sizes contain 0.1% BSA

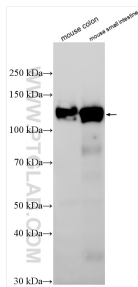
For technical support and original validation data for this product please contact:

T: 1 (888) 4PTGLAB (1-888-478-4522) (toll free in USA), or 1(312) 455-8498 (outside USA)

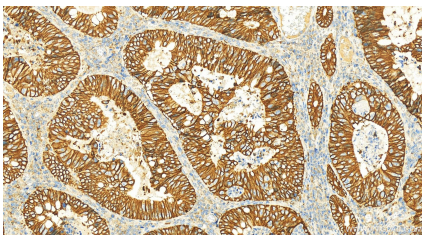
E: [proteintech@ptglab.com](mailto:proteintech@ptglab.com)  
W: [ptglab.com](http://ptglab.com)

This product is exclusively available under Proteintech Group brand and is not available to purchase from any other manufacturer.

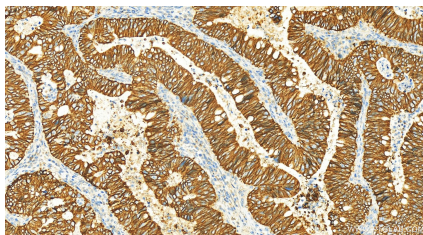
## Selected Validation Data



Various lysates were subjected to SDS PAGE followed by western blot with 24339-1-AP (Cadherin-17 antibody) at dilution of 1:10000 incubated at room temperature for 1.5 hours.



Immunohistochemical analysis of paraffin-embedded colon cancer slide using 24339-1-AP (Cadherin-17 antibody) at dilution of 1:400 (under 20x lens). Heat mediated antigen retrieval with Tris-EDTA buffer (pH 9.0).



Immunohistochemical analysis of paraffin-embedded colon cancer slide using 24339-1-AP (Cadherin-17 antibody) at dilution of 1:400 (under 20x lens). Heat mediated antigen retrieval with Tris-EDTA buffer (pH 9.0).