

For Research Use Only

TMEM25 Polyclonal antibody

Catalog Number: 24361-1-AP

Featured Product

1 Publications



Basic Information

Catalog Number: 24361-1-AP	GenBank Accession Number: BC051841	Purification Method: Antigen affinity purification
Size: 150ul , Concentration: 400 µg/ml by Nanodrop and 267 µg/ml by Bradford method using BSA as the standard;	GeneID (NCBI): 84866	Recommended Dilutions: WB 1:5000-1:50000 IHC 1:250-1:1000
Source: Rabbit	Full Name: transmembrane protein 25	
Isotype: IgG	Calculated MW: 366 aa, 39 kDa	
Immunogen Catalog Number: AG19964	Observed MW: 40 kDa	

Applications

Tested Applications: IHC, WB, ELISA	Positive Controls:
Cited Applications: CoIP, IF, WB	WB : mouse liver tissue, rat liver tissue
Species Specificity: human, mouse, rat	IHC : human liver tissue,
Cited Species: human, mouse	
Note-IHC: suggested antigen retrieval with TE buffer pH 9.0; (*) Alternatively, antigen retrieval may be performed with citrate buffer pH 6.0	

Background Information

TMEM25 is a novel member of the immunoglobulin superfamily. BC042896 and AY358919 cDNAs are derived from human TMEM25 gene. TMEM25 isoform 1 (BC042896), consisting of exons 1-9, encodes a 366-aa transmembrane protein. TMEM25 isoform 2 (AY358919), consisting of exons 1-4 and 6-9, encodes a 322-aa secreted protein (PMID:15254712). Human TMEM25 gene are found to encode transmembrane-type as well as secreted-type proteins due to alternative splicing of exon-skipping type. TMEM25 mRNA is expressed in brain, including cerebellar cortex and hippocampus, as well as in neuroblastoma, brain tumors, and gastric cancer. TMEM25 is a target of pharmacogenomics in the field of oncology and regenerative medicine. TMEM25 mRNAs may be useful members of a panel of favorable prognostic and predictive markers for breast cancer(PMID:19776672).

Notable Publications

Author	Pubmed ID	Journal	Application
Haiqing Zhang	31424425	J Clin Invest	WB,IF,CoIP

Storage

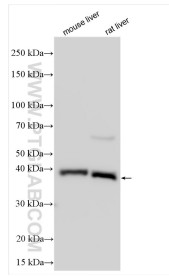
Storage:
Store at -20°C. Stable for one year after shipment.
Storage Buffer:
PBS with 0.02% sodium azide and 50% glycerol pH 7.3.
Aliquoting is unnecessary for -20°C storage

*** 20ul sizes contain 0.1% BSA

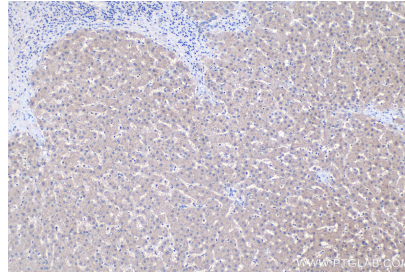
For technical support and original validation data for this product please contact:
T: 1 (888) 4PTGLAB (1-888-478-4522) (toll free in USA), or 1(312) 455-8498 (outside USA)
E: proteintech@ptglab.com
W: ptglab.com

This product is exclusively available under Proteintech Group brand and is not available to purchase from any other manufacturer.

Selected Validation Data



Various lysates were subjected to SDS PAGE followed by western blot with 24361-1-AP (TMEM25 antibody) at dilution of 1:10000 incubated at room temperature for 1.5 hours.



Immunohistochemical analysis of paraffin-embedded human liver tissue slide using 24361-1-AP (TMEM25 antibody) at dilution of 1:500 (under 10x lens). Heat mediated antigen retrieval with Tris-EDTA buffer (pH 9.0).