

For Research Use Only

GPATCH2 Polyclonal antibody

Catalog Number: 24366-1-AP

1 Publications



Basic Information

Catalog Number:

24366-1-AP

Size:

150ul , Concentration: 1000 ug/ml by Nanodrop and 513 ug/ml by Bradford method using BSA as the standard;

Source:

Rabbit

Isotype:

IgG

Immunogen Catalog Number:

AG21647

GenBank Accession Number:

BC063474

GeneID (NCBI):

55105

UNIPROT ID:

Q9NW75

Full Name:

G patch domain containing 2

Calculated MW:

528 aa, 59 kDa

Observed MW:

65-70 kDa

Purification Method:

Antigen affinity purification

Recommended Dilutions:

WB 1:500-1:1000

IHC 1:20-1:200

Applications

Tested Applications:

WB, IHC, ELISA

Cited Applications:

WB

Species Specificity:

human, mouse

Cited Species:

mouse

Note-IHC: suggested antigen retrieval with TE buffer pH 9.0; (*) Alternatively, antigen retrieval may be performed with citrate buffer pH 6.0

Positive Controls:

WB : mouse spleen tissue, mouse kidney tissue, mouse thymus tissue

IHC : human breast cancer tissue, human testis tissue

Notable Publications

Author	Pubmed ID	Journal	Application
Destiny Dalseno	36973252	Cell Death Dis	WB

Storage

Storage:

Store at -20°C. Stable for one year after shipment.

Storage Buffer:

PBS with 0.02% sodium azide and 50% glycerol pH 7.3.

Aliquoting is unnecessary for -20°C storage

*** 20ul sizes contain 0.1% BSA

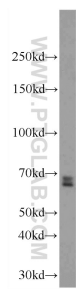
For technical support and original validation data for this product please contact:

T: 1 (888) 4PTGLAB (1-888-478-4522) (toll free in USA), or 1(312) 455-8498 (outside USA)

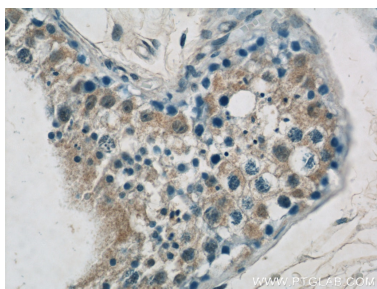
E: proteintech@ptglab.com
W: ptglab.com

This product is exclusively available under Proteintech Group brand and is not available to purchase from any other manufacturer.

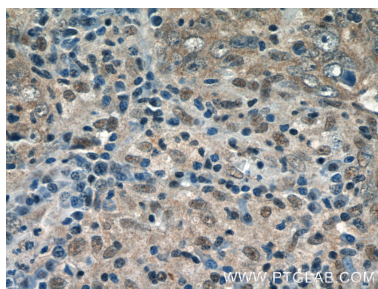
Selected Validation Data



mouse spleen tissue were subjected to SDS PAGE followed by western blot with 24366-1-AP (GPATCH2 Antibody) at dilution of 1:600 incubated at room temperature for 1.5 hours.



Immunohistochemical analysis of paraffin-embedded human testis tissue slide using 24366-1-AP (GPATCH2 Antibody) at dilution of 1:50 (under 40x lens).



Immunohistochemical analysis of paraffin-embedded human breast cancer tissue slide using 24366-1-AP (GPATCH2 Antibody) at dilution of 1:50 (under 40x lens).