

For Research Use Only

# NCBP3 Polyclonal antibody

Catalog Number: 24384-1-AP

1 Publications



## Basic Information

### Catalog Number:

24384-1-AP

### Size:

150ul , Concentration: 400 ug/ml by Nanodrop and 280 ug/ml by Bradford method using BSA as the standard;

### Source:

Rabbit

### Isotype:

IgG

### Immunogen Catalog Number:

AG20021

### GenBank Accession Number:

BC148856

### GeneID (NCBI):

55421

### UNIPROT ID:

Q53F19

### Full Name:

chromosome 17 open reading frame 85

### Calculated MW:

620 aa, 70 kDa

### Observed MW:

71-80 kDa

### Purification Method:

Antigen affinity purification

### Recommended Dilutions:

WB: 1:1000-1:4000

IF/ICC: 1:400-1:1600

## Applications

### Tested Applications:

WB, IF/ICC, ELISA

### Cited Applications:

WB

### Species Specificity:

human

### Cited Species:

human

### Positive Controls:

WB : A549 cells, HeLa cells, Jurkat cells, PC-3 cells

IF/ICC : HeLa cells,

## Background Information

chromosome 17 open reading frame 85(C17orf85)also named as Protein ELG is 620 amino acids protein, which is localizes in human chromosome 17. The function of protein is still non-known and it consists of some phosphorylation site . It may involves in human embryonic stem cell differentiation.

## Notable Publications

Author	Pubmed ID	Journal	Application
Xiwen Li	32618493	RNA Biol	WB

## Storage

### Storage:

Store at -20°C. Stable for one year after shipment.

### Storage Buffer:

PBS with 0.02% sodium azide and 50% glycerol, pH7.3

Aliquoting is unnecessary for -20°C storage

\*\*\* 20ul sizes contain 0.1% BSA

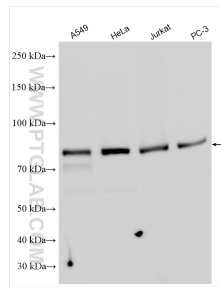
For technical support and original validation data for this product please contact:

T: 1 (888) 4PTGLAB (1-888-478-4522) (toll free in USA), or 1(312) 455-8498 (outside USA)

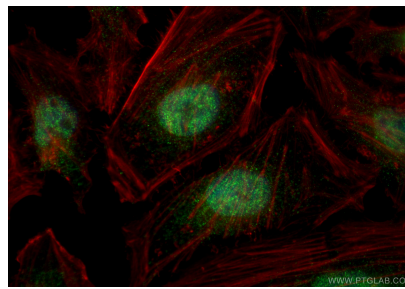
E: [proteintech@ptglab.com](mailto:proteintech@ptglab.com)  
W: [ptglab.com](http://ptglab.com)

This product is exclusively available under Proteintech Group brand and is not available to purchase from any other manufacturer.

## Selected Validation Data



Various lysates were subjected to SDS PAGE followed by western blot with 24384-1-AP (NCBP3 antibody) at dilution of 1:2000 incubated at room temperature for 1.5 hours.



Immunofluorescent analysis of (4% PFA) fixed HeLa cells using NCBP3 antibody (24384-1-AP) at dilution of 1:800 and Coralite®488-Conjugated Goat Anti-Rabbit IgG(H+L) (SA00013-2), CL594-phalloidin (red).