

For Research Use Only

MLK4 Polyclonal antibody

Catalog Number:24395-1-AP



Basic Information

Catalog Number: 24395-1-AP	GenBank Accession Number: BC136649	Purification Method: Antigen affinity purification
Size: 150ul , Concentration: 400 ug/ml by Nanodrop and 247 ug/ml by Bradford method using BSA as the standard;	GeneID (NCBI): 84451	Recommended Dilutions: WB 1:500-1:2000 IF/ICC 1:10-1:100
Source: Rabbit	UNIPROT ID: Q5TCX8	
Isotype: IgG	Full Name: mixed lineage kinase 4	
Immunogen Catalog Number: AG18904	Calculated MW: 1036 aa, 114 kDa	
	Observed MW: 53 kDa	

Applications

Tested Applications: WB, IF/ICC, ELISA	Positive Controls: WB : HeLa cells, IF/ICC : C6 cells,
Species Specificity: human, mouse, rat	

Background Information

MLK4 belongs to the MAP kinase kinase kinase subfamily. The MLK family members are characterized by the presence of signature sequences of Ser/Thr and Tyr kinases within their catalytic domain. The MLK1-4 contains an aminoterminal Src-Homology (SH3) domain, followed by the kinase domain, a leucine-zipper region, and a Cdc42/Rac-interactive binding (CRIB) motif. MLK4 expressed in two splicing variants, MLK4 α and MLK4 β . The difference of these two isoforms is located in their C-terminal portion. The negative effect of MLK4 on LPS-induced ERK and JNK activation could be very important in controlling the level of cytokine expression, and thus maintaining the balance of inflammatory responses.(PMID:21602844). This protein has 3 isoforms produced by alternative splicing with the molecular weight of 63 kDa, 113 kDa, 53 kDa.

Storage

Storage:
Store at -20°C. Stable for one year after shipment.
Storage Buffer:
PBS with 0.02% sodium azide and 50% glycerol pH 7.3.
Aliquoting is unnecessary for -20°C storage

*** 20ul sizes contain 0.1% BSA

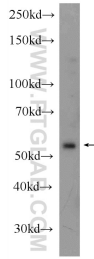
For technical support and original validation data for this product please contact:

T: 1 (888) 4PTGLAB (1-888-478-4522) (toll free in USA), or 1(312) 455-8498 (outside USA)

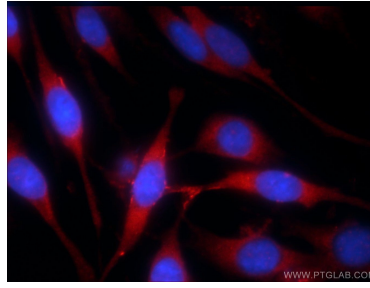
E: proteintech@ptglab.com
W: ptglab.com

This product is exclusively available under Proteintech Group brand and is not available to purchase from any other manufacturer.

Selected Validation Data



HeLa cells were subjected to SDS PAGE followed by western blot with 24395-1-AP (MLK4 antibody at dilution of 1:1000 incubated at room temperature for 1.5 hours.



Immunofluorescent analysis of C6 cells using 24395-1-AP (MLK4 antibody) at dilution of 1:25 and Rhodamine-Goat anti-Rabbit IgG.