

For Research Use Only

KTELC1 Polyclonal antibody

Catalog Number: 24409-1-AP



Basic Information

Catalog Number: 24409-1-AP	GenBank Accession Number: BC048810	Purification Method: Antigen affinity purification
Size: 150ul , Concentration: 850 ug/ml by Nanodrop and 407 ug/ml by Bradford method using BSA as the standard;	GeneID (NCBI): 56983	Recommended Dilutions: WB 1:500-1:1000
Source: Rabbit	UNIPROT ID: Q8NBL1	IHC 1:50-1:500
Isotype: IgG	Full Name: KTEL (Lys-Tyr-Glu-Leu) containing 1	IF/ICC 1:50-1:500
Immunogen Catalog Number: AG19942	Calculated MW: 392 aa, 46 kDa	
	Observed MW: 65 kDa	

Applications

Tested Applications: WB, IHC, IF/ICC, ELISA	Positive Controls:
Species Specificity: human, mouse	WB : HepG2 cells, HEK-293 cells, Hela cells
Note-IHC: suggested antigen retrieval with TE buffer pH 9.0; (*) Alternatively, antigen retrieval may be performed with citrate buffer pH 6.0	IHC : human liver tissue,
	IF/ICC : C2C12 cells,

Background Information

KTELC1 also termed as CLP46 is a glucosyltransferase, which implicates in Protein modification and glycosylation. KTELC1 encodes a 392 amino acids protein and its molecular weight is 46kda, but is exists glycosylation modification. KTELC1 is localized in endoplasmic reticulum lumen and abundantly expressed in liver, brain, heart, skeletal muscle, spleen, kidney, placenta, lung and peripheral blood leukocyte. KTELC1 may regulation in cell proliferation and Notch signal pathway.¹

Storage

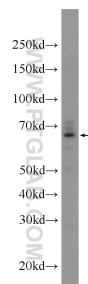
Storage:
Store at -20°C. Stable for one year after shipment.
Storage Buffer:
PBS with 0.02% sodium azide and 50% glycerol pH 7.3.
Aliquoting is unnecessary for -20°C storage

*** 20ul sizes contain 0.1% BSA

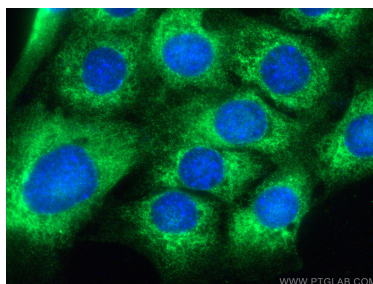
For technical support and original validation data for this product please contact:
T: 1 (888) 4PTGLAB (1-888-478-4522) (toll free in USA), or 1(312) 455-8498 (outside USA)
E: proteintech@ptglab.com
W: ptglab.com

This product is exclusively available under Proteintech Group brand and is not available to purchase from any other manufacturer.

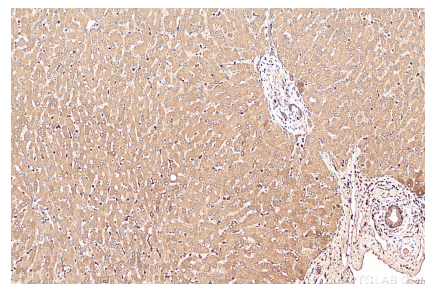
Selected Validation Data



HepG2 cells were subjected to SDS PAGE followed by western blot with 24409-1-AP (KTELC1 Antibody) at dilution of 1:600 incubated at room temperature for 1.5 hours.



Immunofluorescent analysis of (4% PFA) fixed C2C12 cells using KTELC1 antibody (24409-1-AP) at dilution of 1:200 and CoraLite®488-Conjugated Goat Anti-Rabbit IgG(H+L).



Immunohistochemical analysis of paraffin-embedded human liver tissue slide using 24409-1-AP (KTELC1 antibody) at dilution of 1:200 (under 10x lens). Heat mediated antigen retrieval with Tris-EDTA buffer (pH 9.0).