

For Research Use Only

ATG14/Barkor (C-terminal) Polyclonal antibody

Catalog Number: 24412-1-AP

Featured Product

5 Publications



Basic Information

Catalog Number:

24412-1-AP

Size:

150ul, Concentration: 400 ug/ml by Nanodrop and 207 ug/ml by Bradford method using BSA as the standard;

Source:

Rabbit

Isotype:

IgG

Immunogen Catalog Number:

AG19707

GenBank Accession Number:

BC109090

GeneID (NCBI):

22863

UNIPROT ID:

Q6ZNE5

Full Name:

KIAA0831

Calculated MW:

492 aa, 55 kDa

Observed MW:

65-68 kDa, 42 kDa

Purification Method:

Antigen affinity purification

Recommended Dilutions:

WB 1:500-1:1000

IHC 1:20-1:200

IF/ICC 1:50-1:500

Applications

Tested Applications:

WB, IHC, IF/ICC, ELISA

Cited Applications:

WB, IF

Species Specificity:

human, mouse

Cited Species:

human, mouse

Note-IHC: suggested antigen retrieval with TE buffer pH 9.0; (*) Alternatively, antigen retrieval may be performed with citrate buffer pH 6.0

Positive Controls:

WB : mouse brain tissue, HeLa cells

IHC : human brain tissue, human liver tissue

IF/ICC : HeLa cells,

Background Information

Barkor, also named as ATG14, Atg14L and KIAA0831, is named as Beclin 1-associated autophagy-related key regulator protein. The function of Barkor in autophagy has been manifested in several assays, including stress-induced LC3 lipidation, autophagosome formation, and Salmonella typhimurium amplification. A major band around 65-68 kDa and a light band around 42 kDa can be observed in western blot which may be caused by alternative splicing of ATG14. The specificity of ATG14 antibody has been tested by siRNA test.

Notable Publications

| Author | Pubmed ID | Journal | Application |
|---------------|-----------|---------------|-------------|
| Qiang Fu | 25245007 | Microb Pathog | WB |
| Shun Kato | 34704591 | J Cell Sci | IF |
| Jingqiong Lin | 34411602 | Exp Eye Res | WB,IF |

Storage

Storage:

Store at -20°C. Stable for one year after shipment.

Storage Buffer:

PBS with 0.02% sodium azide and 50% glycerol pH 7.3.

Aliquoting is unnecessary for -20°C storage

*** 20ul sizes contain 0.1% BSA

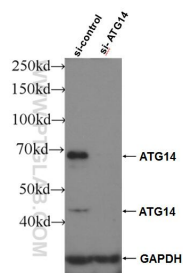
For technical support and original validation data for this product please contact:

T: 1 (888) 4PTGLAB (1-888-478-4522) (toll free in USA), or 1(312) 455-8498 (outside USA)

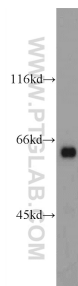
E: proteintech@ptglab.com
W: ptglab.com

This product is exclusively available under Proteintech Group brand and is not available to purchase from any other manufacturer.

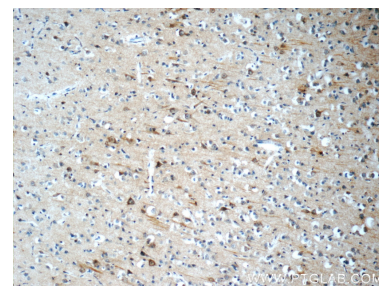
Selected Validation Data



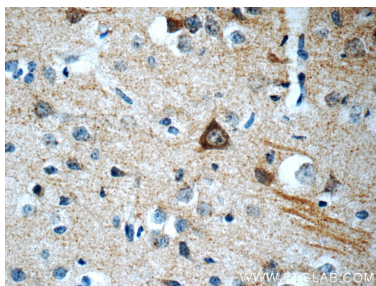
WB result of ATG14/Barkor (C-terminal) antibody (24412-1-AP; 1:1000; incubated at room temperature for 1.5 hours) with sh-Control and sh-ATG14/Barkor (C-terminal) transfected HeLa cells.



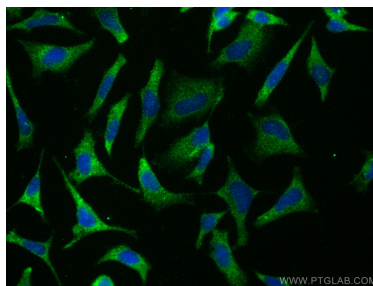
mouse brain tissue were subjected to SDS PAGE followed by western blot with 24412-1-AP (ATG14/Barkor (C-terminal) antibody at dilution of 1:600 incubated at room temperature for 1.5 hours.



Immunohistochemical analysis of paraffin-embedded human brain slide using 24412-1-AP (ATG14/Barkor (C-terminal) antibody at dilution of 1:50 (under 10x lens).



Immunohistochemical analysis of paraffin-embedded human brain slide using 24412-1-AP (ATG14/Barkor (C-terminal) antibody at dilution of 1:50 (under 40x lens).



Immunofluorescent analysis of (-20°C Ethanol) fixed HeLa cells using ATG14/Barkor (C-terminal) antibody (24412-1-AP) at dilution of 1:200 and CoraLite® 488-Conjugated AffiniPure Goat Anti-Rabbit IgG(H+L) (SA00013-2).