

For Research Use Only

FAM168B Polyclonal antibody

Catalog Number: 24422-1-AP



Basic Information

Catalog Number: 24422-1-AP	GenBank Accession Number: BC066347	Purification Method: Antigen affinity purification
Size: 150ul , Concentration: 850 µg/ml by Nanodrop and 440 µg/ml by Bradford method using BSA as the standard;	GeneID (NCBI): 130074	Recommended Dilutions: IHC 1:20-1:200
Source: Rabbit	Full Name: family with sequence similarity 168, member B	
Isotype: IgG	Calculated MW: 195 aa, 20 kDa	
Immunogen Catalog Number: AG19535		

Applications

Tested Applications:

IHC, ELISA

Species Specificity:

human

Note-IHC: suggested antigen retrieval with TE buffer pH 9.0; (*) Alternatively, antigen retrieval may be performed with citrate buffer pH 6.0

Positive Controls:

IHC : human cervical cancer tissue, human stomach cancer tissue

Background Information

Storage

Storage:

Store at -20°C. Stable for one year after shipment.

Storage Buffer:

PBS with 0.02% sodium azide and 50% glycerol pH 7.3.

Aliquoting is unnecessary for -20°C storage

*** 20ul sizes contain 0.1% BSA

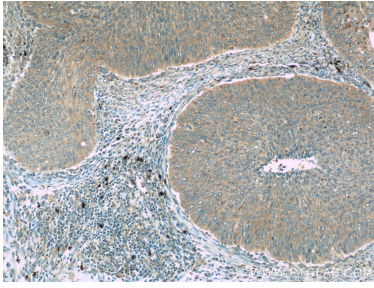
For technical support and original validation data for this product please contact:

T: 1 (888) 4PTGLAB (1-888-478-4522) (toll free in USA), or 1(312) 455-8498 (outside USA)

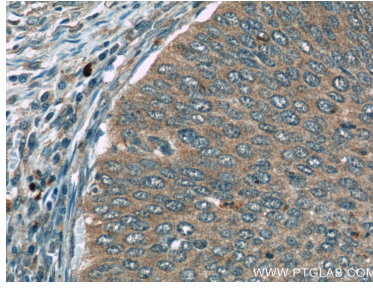
E: proteintech@ptglab.com
W: ptglab.com

This product is exclusively available under Proteintech Group brand and is not available to purchase from any other manufacturer.

Selected Validation Data



Immunohistochemical analysis of paraffin-embedded human cervical cancer slide using 24422-1-AP (FAM168B Antibody) at dilution of 1:50 (under 10x lens).



Immunohistochemical analysis of paraffin-embedded human cervical cancer slide using 24422-1-AP (FAM168B Antibody) at dilution of 1:50 (under 40x lens).