

For Research Use Only

# WDR7 Polyclonal antibody

Catalog Number: 24431-1-AP

1 Publications



## Basic Information

<b>Catalog Number:</b> 24431-1-AP	<b>GenBank Accession Number:</b> BC131558	<b>Purification Method:</b> Antigen affinity purification
<b>Size:</b> 150ul , Concentration: 800 ug/ml by Nanodrop;	<b>GeneID (NCBI):</b> 23335	<b>Recommended Dilutions:</b> WB 1:500-1:3000 IHC 1:50-1:500
<b>Source:</b> Rabbit	<b>UNIPROT ID:</b> Q9Y4E6	
<b>Isotype:</b> IgG	<b>Full Name:</b> WD repeat domain 7	
<b>Immunogen Catalog Number:</b> AG19072	<b>Calculated MW:</b> 1490 aa, 164 kDa	
	<b>Observed MW:</b> 145-150 kDa	

## Applications

<b>Tested Applications:</b> WB, IHC, ELISA	<b>Positive Controls:</b> WB : mouse brain tissue, rat brain tissue IHC : human liver tissue, mouse testis tissue
<b>Cited Applications:</b> IF	
<b>Species Specificity:</b> human, rat, mouse	
<b>Note-IHC: suggested antigen retrieval with TE buffer pH 9.0; (*) Alternatively, antigen retrieval may be performed with citrate buffer pH 6.0</b>	

## Background Information

WDR7, also named as KIAA0541 and TRAG, belongs to the WD-repeat protein family. WD repeats are areas with the repetitions of approximately 40 amino acids that have ends with trp-asn and gly-his amino acids (GH-WD) which may help to form a multi-protein complex. WDR7 is the gene encoding adjacent of lincRNA-RoR, which has an important role in apoptosis and cell cycle (PMID: 32128092). WDR7 has 2 isoforms with the molecular mass of 160 and 164 kDa. Sometimes lower molecular weight around 150 kDa can also be observed, which may be a modified variant of WDR7.

## Notable Publications

Author	Pubmed ID	Journal	Application
Ellen Crummy	31004036	J Biol Chem	IF

## Storage

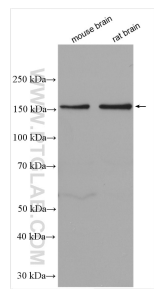
**Storage:**  
Store at -20°C. Stable for one year after shipment.  
**Storage Buffer:**  
PBS with 0.02% sodium azide and 50% glycerol pH 7.3.  
**Aliquoting is unnecessary for -20°C storage**

\*\*\* 20ul sizes contain 0.1% BSA

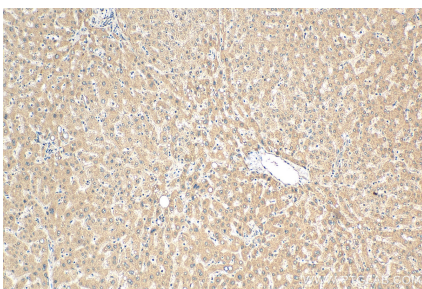
For technical support and original validation data for this product please contact:  
T: 1 (888) 4PTGLAB (1-888-478-4522) (toll free in USA), or 1(312) 455-8498 (outside USA)  
E: [proteintech@ptglab.com](mailto:proteintech@ptglab.com)  
W: [ptglab.com](http://ptglab.com)

This product is exclusively available under Proteintech Group brand and is not available to purchase from any other manufacturer.

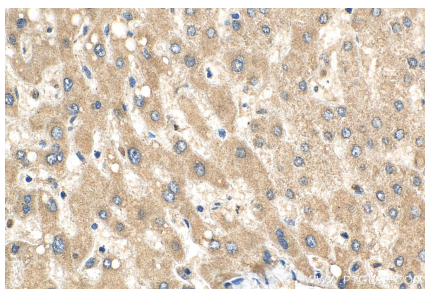
## Selected Validation Data



Various lysates were subjected to SDS PAGE followed by western blot with 24431-1-AP (WDR7 antibody) at dilution of 1:1500 incubated at room temperature for 1.5 hours.



Immunohistochemical analysis of paraffin-embedded human liver tissue slide using 24431-1-AP (WDR7 antibody) at dilution of 1:200 (under 10x lens). Heat mediated antigen retrieval with Tris-EDTA buffer (pH 9.0).



Immunohistochemical analysis of paraffin-embedded human liver tissue slide using 24431-1-AP (WDR7 antibody) at dilution of 1:200 (under 40x lens). Heat mediated antigen retrieval with Tris-EDTA buffer (pH 9.0).