

For Research Use Only

# BRIP1(N-terminal) Polyclonal antibody

Catalog Number: 24436-1-AP

Featured Product

1 Publications



## Basic Information

Catalog Number:

24436-1-AP

Size:

150ul, Concentration: 1000 ug/ml by Nanodrop and 467 ug/ml by Bradford method using BSA as the standard;

Source:

Rabbit

Isotype:

IgG

Immunogen Catalog Number:

AG19907

GenBank Accession Number:

BC101472

GeneID (NCBI):

83990

UNIPROT ID:

Q9BX63

Full Name:

BRCA1 interacting protein C-terminal helicase 1

Calculated MW:

1249 aa, 141 kDa

Observed MW:

140-150 kDa

Purification Method:

Antigen affinity purification

Recommended Dilutions:

WB 1:500-1:2000

## Applications

Tested Applications:

WB, ELISA

Cited Applications:

WB

Species Specificity:

human, mouse

Cited Species:

human

Positive Controls:

WB : HeLa cells, MCF-7 cells

## Background Information

BRIP1 also named as BACH1, FANCI or ATP dependent RNA helicase BRIP1 is a 1249 amino acid protein, which contains one helicase ATP-binding domain and belongs to the DEAD box helicase family, DEAH subfamily. BRIP1 contains nuclear localization signal and is ubiquitously expressed with highest levels in testis, an expression pattern similar to that of BRCA1. BRIP1 is required to resolve the secondary structures of guanine-rich DNA that occasionally form during lagging-strand DNA synthesis.

## Notable Publications

Author	Pubmed ID	Journal	Application
Jiao Zhao	35597237	Mol Cell	WB

## Storage

Storage:

Store at -20°C. Stable for one year after shipment.

Storage Buffer:

PBS with 0.02% sodium azide and 50% glycerol pH 7.3.

Aliquoting is unnecessary for -20°C storage

\*\*\* 20ul sizes contain 0.1% BSA

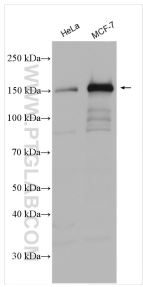
For technical support and original validation data for this product please contact:

T: 1 (888) 4PTGLAB (1-888-478-4522) (toll free in USA), or 1(312) 455-8498 (outside USA)

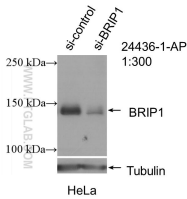
E: [proteintech@ptglab.com](mailto:proteintech@ptglab.com)  
W: [ptglab.com](http://ptglab.com)

This product is exclusively available under Proteintech Group brand and is not available to purchase from any other manufacturer.

Selected Validation Data



Various lysates were subjected to SDS PAGE followed by western blot with 24436-1-AP (BRIP1(N-terminal) antibody) at dilution of 1:1000 incubated at room temperature for 1.5 hours.



WB result of BRIP1(N-terminal) antibody (24436-1-AP; 1:300; incubated at room temperature for 1.5 hours) with sh-Control and sh-BRIP1(N-terminal) transfected HeLa cells.