

For Research Use Only

C1orf26 Polyclonal antibody

Catalog Number: 24447-1-AP



Basic Information

Catalog Number:
24447-1-AP

Size:
150ul , Concentration: 800 µg/ml by Nanodrop and 520 µg/ml by Bradford method using BSA as the standard;

Source:
Rabbit

Isotype:
IgG

Immunogen Catalog Number:
AG19655

GenBank Accession Number:
BC030781

GeneID (NCBI):
54823

Full Name:
chromosome 1 open reading frame 26

Calculated MW:
900 aa, 103 kDa

Observed MW:
100-105 kDa

Purification Method:
Antigen affinity purification

Recommended Dilutions:
IP 0.5-4.0 ug for IP and 1:500-1:1000 for WB

Applications

Tested Applications:
IP, ELISA

Species Specificity:
human, mouse

Positive Controls:

IP: mouse testis tissue,

Background Information

Storage

Storage:

Store at -20°C. Stable for one year after shipment.

Storage Buffer:

PBS with 0.02% sodium azide and 50% glycerol pH 7.3.

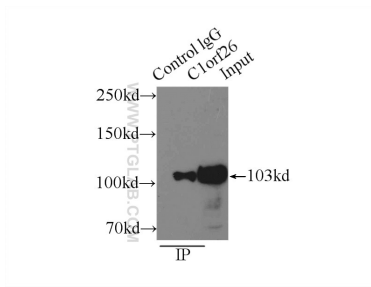
Aliquoting is unnecessary for -20°C storage

***** 20ul sizes contain 0.1% BSA**

For technical support and original validation data for this product please contact:
T: 1 (888) 4PTGLAB (1-888-478-4522) (toll free in USA), or 1(312) 455-8498 (outside USA) E: proteintech@ptglab.com
W: ptglab.com

This product is exclusively available under Proteintech Group brand and is not available to purchase from any other manufacturer.

Selected Validation Data



IP Result of anti-C1orf26 (IP:24447-1-AP, 5 μ g;
Detection:24447-1-AP 1:500) with mouse testis
tissue lysate 8000 μ g.