

For Research Use Only

# PRPF39 Polyclonal antibody

Catalog Number: 24480-1-AP



## Basic Information

**Catalog Number:**

24480-1-AP

**Size:**

150ul, Concentration: 750 ug/ml by Nanodrop and 380 ug/ml by Bradford method using BSA as the standard;

**Source:**

Rabbit

**Isotype:**

IgG

**Immunogen Catalog Number:**

AG21683

**GenBank Accession Number:**

BC125126

**GeneID (NCBI):**

55015

**UNIPROT ID:**

Q86UA1

**Full Name:**

PRP39 pre-mRNA processing factor 39 homolog (S. cerevisiae)

**Calculated MW:**

669 aa, 78 kDa

**Observed MW:**

75-85 kDa

**Purification Method:**

Antigen affinity purification

**Recommended Dilutions:**

WB 1:500-1:2000

IHC 1:200-1:800

## Applications

**Tested Applications:**

WB, IHC, ELISA

**Species Specificity:**

human

**Positive Controls:**

WB : K-562 cells, COLO 320 cells, Raji cells

IHC : human testis tissue,

**Note-IHC: suggested antigen retrieval with TE buffer pH 9.0; (\*) Alternatively, antigen retrieval may be performed with citrate buffer pH 6.0**

## Background Information

PRPF39 also termed as Pre mRNA processing factor 39 or PRP39 homolog is a 669 amino acid protein, which contains 7 HAT repeats and belongs to the PRP39 family. PRPF39 localizes in nucleus and may play a role in mRNA splicing.

## Storage

**Storage:**

Store at -20°C. Stable for one year after shipment.

**Storage Buffer:**

PBS with 0.02% sodium azide and 50% glycerol pH 7.3.

Aliquoting is unnecessary for -20°C storage

\*\*\* 20ul sizes contain 0.1% BSA

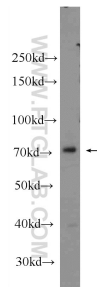
For technical support and original validation data for this product please contact:

T: 1 (888) 4PTGLAB (1-888-478-4522) (toll free in USA), or 1(312) 455-8498 (outside USA)

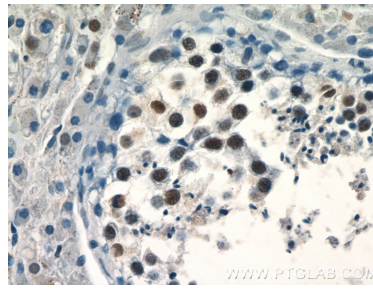
E: [proteintech@ptglab.com](mailto:proteintech@ptglab.com)  
W: [ptglab.com](http://ptglab.com)

This product is exclusively available under Proteintech Group brand and is not available to purchase from any other manufacturer.

## Selected Validation Data



K-562 cells were subjected to SDS PAGE followed by western blot with 24480-1-AP (PRPF39 Antibody) at dilution of 1:1000 incubated at room temperature for 1.5 hours.



Immunohistochemical analysis of paraffin-embedded human testis tissue slide using 24480-1-AP (PRPF39 Antibody) at dilution of 1:400 (under 40x lens).