

For Research Use Only

# E2F7 Polyclonal antibody

Catalog Number: 24489-1-AP

Featured Product

15 Publications



## Basic Information

Catalog Number:

24489-1-AP

Size:

150ul, Concentration: 650 ug/ml by Nanodrop and 380 ug/ml by Bradford method using BSA as the standard;

Source:

Rabbit

Isotype:

IgG

Immunogen Catalog Number:

AG21599

GenBank Accession Number:

BC136366

GeneID (NCBI):

144455

UNIPROT ID:

Q96AV8

Full Name:

E2F transcription factor 7

Calculated MW:

911 aa, 100 kDa

Observed MW:

~100 kDa

Purification Method:

Antigen affinity purification

Recommended Dilutions:

WB 1:500-1:2000

## Applications

Tested Applications:

WB, ELISA

Cited Applications:

WB, IHC, IF, CoIP

Species Specificity:

human

Cited Species:

human, mouse

Positive Controls:

WB: U2OS cells,

## Background Information

E2F7, also named E2F transcription factor 7, is a 911 amino acid protein belonging to the E2F/DP family. E2F7 localizes in the nucleus and mainly forms homodimers and, to a lesser extent, heterodimers with E2F8. E2F7 as a transcription factor involves in various processes such as angiogenesis, polyploidization of specialized cells, and DNA damage response. E2F7 mainly forms homodimers and to a lesser extent, heterodimers with E2F8. (PMID: 18194653)

## Notable Publications

Author	Pubmed ID	Journal	Application
Chang Yang	33061852	Cancer Cell Int	WB,IF,IHC
Yawen Ma	36400349	Acta Biomater	WB,IF
Amanda S Coutts	29760477	Cell Death Dis	IF

## Storage

Storage:

Store at -20°C. Stable for one year after shipment.

Storage Buffer:

PBS with 0.02% sodium azide and 50% glycerol pH 7.3.

Aliquoting is unnecessary for -20°C storage

\*\*\* 20ul sizes contain 0.1% BSA

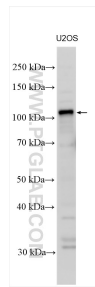
For technical support and original validation data for this product please contact:

T: 1 (888) 4PTGLAB (1-888-478-4522) (toll free in USA), or 1(312) 455-8498 (outside USA)

E: [proteintech@ptglab.com](mailto:proteintech@ptglab.com)  
W: [ptglab.com](http://ptglab.com)

This product is exclusively available under Proteintech Group brand and is not available to purchase from any other manufacturer.

## Selected Validation Data



Various lysates were subjected to SDS PAGE followed by western blot with 24489-1-AP (E2F7 antibody) at dilution of 1:1000 incubated at room temperature for 1.5 hours.