

For Research Use Only

C16orf72 Polyclonal antibody

Catalog Number: 24522-1-AP



Basic Information

Catalog Number: 24522-1-AP	GenBank Accession Number: BC113570	Purification Method: Antigen affinity purification
Size: 150ul , Concentration: 1000 µg/ml by Nanodrop and 547 µg/ml by Bradford method using BSA as the standard;	GeneID (NCBI): 29035	Recommended Dilutions: WB 1:200-1:1000
Source: Rabbit	Full Name: chromosome 16 open reading frame 72	
Isotype: IgG	Calculated MW: 275 aa, 31 kDa	
Immunogen Catalog Number: AG21585	Observed MW: 31 kDa	

Applications

Tested Applications: WB, ELISA	Positive Controls: WB : HeLa cells,
Species Specificity: human, mouse	

Background Information

C16orf72 is identified on chromosome 16p13.2 loci. The MW of C16orf72 is 25-35 kDa in our detection.

Storage

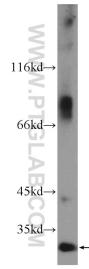
Storage:
Store at -20°C. Stable for one year after shipment.
Storage Buffer:
PBS with 0.02% sodium azide and 50% glycerol pH 7.3.
Aliquoting is unnecessary for -20°C storage

*** 20ul sizes contain 0.1% BSA

For technical support and original validation data for this product please contact:
T: 1 (888) 4PTGLAB (1-888-478-4522) (toll free in USA), or 1(312) 455-8498 (outside USA)
E: proteintech@ptglab.com
W: ptglab.com

This product is exclusively available under Proteintech Group brand and is not available to purchase from any other manufacturer.

Selected Validation Data



HeLa cells were subjected to SDS PAGE followed by western blot with 24522-1-AP (C16orf72 Antibody) at dilution of 1:300 incubated at room temperature for 1.5 hours.