

For Research Use Only

RPRD1B Polyclonal antibody

Catalog Number: 24542-1-AP **1 Publications**



Basic Information

Catalog Number: 24542-1-AP	GenBank Accession Number: BC033629	Purification Method: Antigen affinity purification
Size: 150ul , Concentration: 450 µg/ml by Nanodrop and 253 µg/ml by Bradford method using BSA as the standard;	GeneID (NCBI): 58490	Recommended Dilutions: WB 1:500-1:2000 IF 1:50-1:500
Source: Rabbit	Full Name: regulation of nuclear pre-mRNA domain containing 1B	
Isotype: IgG	Calculated MW: 326 aa, 37 kDa	
Immunogen Catalog Number: AG21578	Observed MW: 37 kDa	

Applications

Tested Applications: IF, WB, ELISA	Positive Controls: WB : HeLa cells, Jurkat cells
Cited Applications: WB	IF : HeLa cells,
Species Specificity: human	
Cited Species: human	

Background Information

Notable Publications

Author	Pubmed ID	Journal	Application
Hu Wang	37425943	bioRxiv	WB

Storage

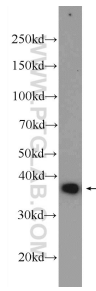
Storage:
Store at -20°C. Stable for one year after shipment.
Storage Buffer:
PBS with 0.02% sodium azide and 50% glycerol pH 7.3.
Aliquoting is unnecessary for -20°C storage

***** 20ul sizes contain 0.1% BSA**

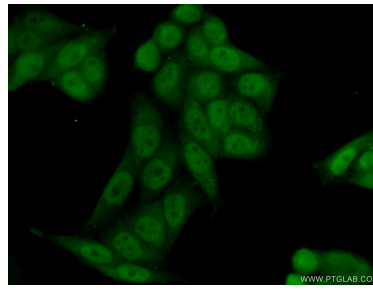
For technical support and original validation data for this product please contact:
T: 1 (888) 4PTGLAB (1-888-478-4522) (toll free in USA), or 1(312) 455-8498 (outside USA)
E: proteintech@ptglab.com
W: ptglab.com

This product is exclusively available under Proteintech Group brand and is not available to purchase from any other manufacturer.

Selected Validation Data



HeLa cells were subjected to SDS PAGE followed by western blot with 24542-1-AP (RPRD1B Antibody) at dilution of 1:1000 incubated at room temperature for 1.5 hours.



Immunofluorescent analysis of (10% Formaldehyde) fixed HeLa cells using 24542-1-AP (RPRD1B antibody) at dilution of 1:50 and Alexa Fluor 488-conjugated AffiniPure Goat Anti-Rabbit IgG(H+L).