

For Research Use Only

FYTTD1 Polyclonal antibody

Catalog Number: 24560-1-AP



Basic Information

Catalog Number: 24560-1-AP	GenBank Accession Number: BC039734	Purification Method: Antigen affinity purification
Size: 150ul , Concentration: 360 µg/ml by Nanodrop and 360 µg/ml by Bradford method using BSA as the standard;	GeneID (NCBI): 84248	Recommended Dilutions: WB 1:200-1:1000
Source: Rabbit	Full Name: forty-two-three domain containing 1	
Isotype: IgG	Calculated MW: 318 aa, 36 kDa	
Immunogen Catalog Number: AG20051	Observed MW: 50 kDa	

Applications

Tested Applications: WB,ELISA	Positive Controls: WB : HeLa cells,
Species Specificity: human	

Background Information

FYTTD1 also termed as UAP56 interacting factor or UIF is a 318 amino acid protein, which belongs to the UIF family. FYTTD1 localizes to nucleus and is required for mRNA export from nucleus to cytoplasm. Functioning as an adaptor, FYTTD1 utilizes the BAT1/DDX39-TAP pathway, which is essential for efficient mRNA export and nuclear pore delivery. FYTTD1 interacts with SSRP1, a protein that is necessary for its recruitment of mRNAs, in addition to a mutually exclusive interaction with BAT1/DDX39 and TAP. The molecular weight of post-translation modified FYTTD1 is observed 50 kDa.

Storage

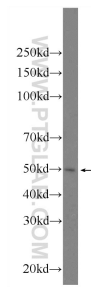
Storage:
Store at -20°C. Stable for one year after shipment.
Storage Buffer:
PBS with 0.02% sodium azide and 50% glycerol pH 7.3.
Aliquoting is unnecessary for -20°C storage

*** 20ul sizes contain 0.1% BSA

For technical support and original validation data for this product please contact:
T: 1 (888) 4PTGLAB (1-888-478-4522) (toll free in USA), or 1(312) 455-8498 (outside USA)
E: proteintech@ptglab.com
W: ptglab.com

This product is exclusively available under Proteintech Group brand and is not available to purchase from any other manufacturer.

Selected Validation Data



HeLa cells were subjected to SDS PAGE followed by western blot with 24560-1-AP (FYTTD1 Antibody) at dilution of 1:300 incubated at room temperature for 1.5 hours.