

For Research Use Only

NCAPG Polyclonal antibody

Catalog Number: 24563-1-AP

Featured Product

10 Publications



Basic Information

Catalog Number:

24563-1-AP

Size:

150ul, Concentration: 650 ug/ml by Nanodrop and 353 ug/ml by Bradford method using BSA as the standard;

Source:

Rabbit

Isotype:

IgG

Immunogen Catalog Number:

AG19926

GenBank Accession Number:

BC068467

GeneID (NCBI):

64151

UNIPROT ID:

Q9BPX3

Full Name:

non-SMC condensin I complex, subunit G

Calculated MW:

1015 aa, 114 kDa

Observed MW:

131 kDa

Purification Method:

Antigen affinity purification

Recommended Dilutions:

WB 1:5000-1:50000

IP 0.5-4.0 ug for 1.0-3.0 mg of total protein lysate

IHC 1:20-1:200

IF/ICC 1:200-1:800

Applications

Tested Applications:

WB, IHC, IF/ICC, IP, ELISA

Cited Applications:

WB, IHC, CoIP

Species Specificity:

human

Cited Species:

human, mouse

Note-IHC: suggested antigen retrieval with TE buffer pH 9.0; (*) Alternatively, antigen retrieval may be performed with citrate buffer pH 6.0

Positive Controls:

WB : HEK-293 cells, HeLa cells, HepG2 cells

IP : HEK-293 cells,

IHC : human testis tissue, human cervical cancer tissue

IF/ICC : HepG2 cells,

Notable Publications

Author	Pubmed ID	Journal	Application
Xie Mengyan	36176446	Front Pharmacol	WB,IHC
Guangrong Zheng	35372056	Front Oncol	WB
Rongguiyi Zhang	35864529	J Transl Med	WB,IHC,CoIP

Storage

Storage:

Store at -20°C. Stable for one year after shipment.

Storage Buffer:

PBS with 0.02% sodium azide and 50% glycerol pH 7.3.

Aliquoting is unnecessary for -20°C storage

*** 20ul sizes contain 0.1% BSA

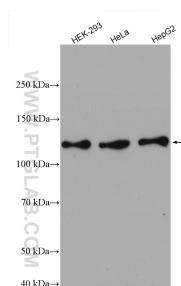
For technical support and original validation data for this product please contact:

T: 1 (888) 4PTGLAB (1-888-478-4522) (toll free in USA), or 1(312) 455-8498 (outside USA)

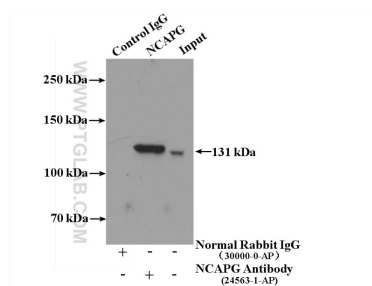
E: proteintech@ptglab.com
W: ptglab.com

This product is exclusively available under Proteintech Group brand and is not available to purchase from any other manufacturer.

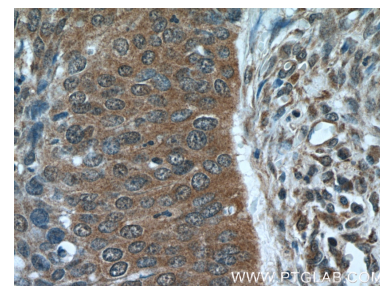
Selected Validation Data



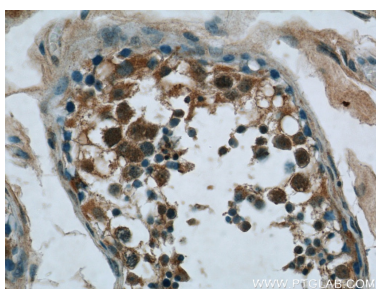
Various lysates were subjected to SDS PAGE followed by western blot with 24563-1-AP (NCAPG antibody) at dilution of 1:10000 incubated at room temperature for 1.5 hours.



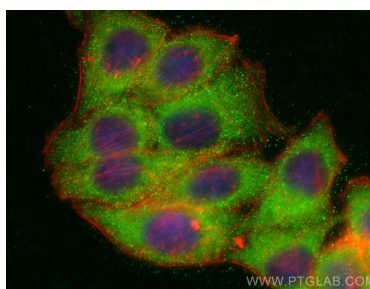
IP result of anti-NCAPG (IP:24563-1-AP, 4ug; Detection:24563-1-AP 1:1000) with HEK-293 cells lysate 3200ug.



Immunohistochemical analysis of paraffin-embedded human cervical cancer tissue slide using 24563-1-AP (NCAPG Antibody) at dilution of 1:50 (under 40x lens).



Immunohistochemical analysis of paraffin-embedded human testis tissue slide using 24563-1-AP (NCAPG Antibody) at dilution of 1:50 (under 40x lens).



Immunofluorescent analysis of (-20°C Ethanol) fixed HepG2 cells using NCAPG antibody (24563-1-AP) at dilution of 1:400 and CoraLite®488-Conjugated AffiniPure Goat Anti-Rabbit IgG(H+L) (SA00013-2), CL594-phalloidin (red).