

For Research Use Only

SLC37A1 Polyclonal antibody

Catalog Number: 24582-1-AP



Basic Information

Catalog Number: 24582-1-AP	GenBank Accession Number: BC152997	Purification Method: Antigen affinity purification
Size: 150ul , Concentration: 500 ug/ml by Nanodrop;	GeneID (NCBI): 54020	Recommended Dilutions: WB 1:500-1:1000 IHC 1:50-1:500 IF/ICC 1:50-1:500
Source: Rabbit	UNIPROT ID: P57057	
Isotype: IgG	Full Name: solute carrier family 37 (glycerol-3-phosphate transporter), member 1	
Immunogen Catalog Number: AG20180	Calculated MW: 533 aa, 58 kDa	
	Observed MW: 60-66 kDa	

Applications

Tested Applications:
WB, IHC, IF/ICC, ELISA

Species Specificity:
human, mouse, rat

Note-IHC: suggested antigen retrieval with TE buffer pH 9.0; (*) Alternatively, antigen retrieval may be performed with citrate buffer pH 6.0

Positive Controls:

WB : mouse kidney tissue, MCF-7 cells, rat kidney tissue

IHC : human stomach cancer tissue,

IF/ICC : MCF-7 cells,

Background Information

SLC37A1 (also known as SPX1) is one of the SLC37 family members, localized in the endoplasmic reticulum (ER) membrane (PMID:29719821). The SLC37A1 protein also shares 30% sequence identity to GlpT, suggesting that SLC37A1 could be a mammalian glycerol-3-phosphate transporter. The SLC37A1 gene is widely expressed, with the highest transcript levels in adult kidney, bone marrow, intestine, spleen, and liver (PMID:24745989). In addition, the SLC37A1 protein shares 59% homology to SLC37A2, 35% homology to SLC37A3, and 22% homology to SLC37A4 (PMID:23506893). SLC37A1 is a 533 amino-acid protein with a calculated molecular weight of 58 kDa and observed molecular weight 60-66kDa.

Storage

Storage:
Store at -20°C. Stable for one year after shipment.
Storage Buffer:
PBS with 0.02% sodium azide and 50% glycerol pH 7.3.
Aliquoting is unnecessary for -20°C storage

*** 20ul sizes contain 0.1% BSA

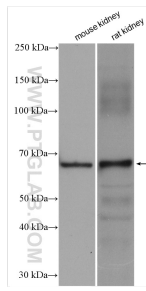
For technical support and original validation data for this product please contact:

T: 1 (888) 4PTGLAB (1-888-478-4522) (toll free in USA), or 1(312) 455-8498 (outside USA)

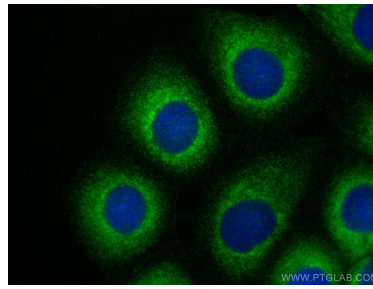
E: proteintech@ptglab.com
W: ptglab.com

This product is exclusively available under Proteintech Group brand and is not available to purchase from any other manufacturer.

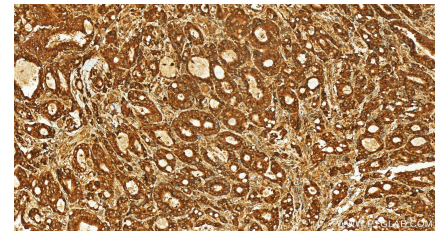
Selected Validation Data



mouse kidney tissue were subjected to SDS PAGE followed by western blot with 24582-1-AP (SLC37A1 antibody) at dilution of 1:500 incubated at room temperature for 1.5 hours.



Immunofluorescent analysis of (-20°C Methanol) fixed MCF-7 cells using SLC37A1 antibody (24582-1-AP) at dilution of 1:200 and CoraLite® 488-Conjugated AffiniPure Goat Anti-Rabbit IgG(H+L).



Immunohistochemical analysis of paraffin-embedded human stomach cancer tissue slide using 24582-1-AP (SLC37A1 antibody) at dilution of 1:200 (under 20x lens). Heat mediated antigen retrieval with Tris-EDTA buffer (pH 9.0).