

For Research Use Only

SLCO4C1 Polyclonal antibody

Catalog Number: 24584-1-AP

Featured Product

6 Publications



Basic Information

Catalog Number:

24584-1-AP

Size:

150ul, Concentration: 400 ug/ml by Nanodrop and 207 ug/ml by Bradford method using BSA as the standard;

Source:

Rabbit

Isotype:

IgG

Immunogen Catalog Number:

AG20177

GenBank Accession Number:

BC152989

GeneID (NCBI):

353189

UNIPROT ID:

Q6ZQN7

Full Name:

solute carrier organic anion transporter family, member 4C1

Calculated MW:

724 aa, 79 kDa

Observed MW:

60-85 kDa

Purification Method:

Antigen affinity purification

Recommended Dilutions:

WB 1:1000-1:4000

IHC 1:200-1:800

Applications

Tested Applications:

WB, IHC, ELISA

Cited Applications:

WB, IHC

Species Specificity:

human, mouse

Cited Species:

human, rat, mouse

Positive Controls:

WB : human plasma, mouse kidney tissue

IHC : human kidney tissue,

Note-IHC: suggested antigen retrieval with TE buffer pH 9.0; (*) Alternatively, antigen retrieval may be performed with citrate buffer pH 6.0

Background Information

SLCO4C1 is the only OATP (organic anion transporting polypeptide) expressed at the human kidney's basolateral side of proximal tubular cells and mediates the excretion of uremic toxins (PMID: 21656517).

Notable Publications

Author	Pubmed ID	Journal	Application
Yuki Kanado	31540689	Biochem Biophys Res Commun	WB
Yue-Hua Jiang	33039628	J Ethnopharmacol	WB
Parker Giroux	35720166	World J Gastrointest Pathophysiol	WB

Storage

Storage:

Store at -20°C. Stable for one year after shipment.

Storage Buffer:

PBS with 0.02% sodium azide and 50% glycerol pH 7.3.

Aliquoting is unnecessary for -20°C storage

*** 20ul sizes contain 0.1% BSA

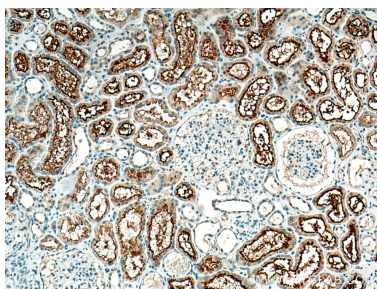
For technical support and original validation data for this product please contact:

T: 1 (888) 4PTGLAB (1-888-478-4522) (toll free in USA), or 1(312) 455-8498 (outside USA)

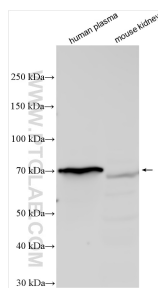
E: proteintech@ptglab.com
W: ptglab.com

This product is exclusively available under Proteintech Group brand and is not available to purchase from any other manufacturer.

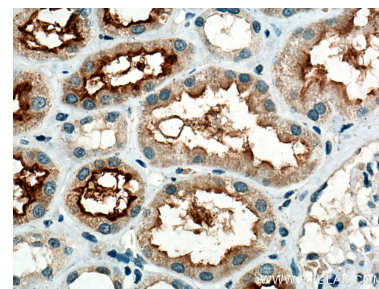
Selected Validation Data



Immunohistochemical analysis of paraffin-embedded human kidney tissue slide using 24584-1-AP (SLCO4C1 antibody) at dilution of 1:400 (under 10x lens). Heat mediated antigen retrieval with Tris-EDTA buffer (pH 9.0).



Various lysates were subjected to SDS PAGE followed by western blot with 24584-1-AP (SLCO4C1 antibody) at dilution of 1:500 incubated at room temperature for 1.5 hours.



Immunohistochemical analysis of paraffin-embedded human kidney tissue slide using 24584-1-AP (SLCO4C1 antibody) at dilution of 1:400 (under 40x lens). Heat mediated antigen retrieval with Tris-EDTA buffer (pH 9.0).