

For Research Use Only

GRK1 Polyclonal antibody

Catalog Number: 24606-1-AP

4 Publications



Basic Information

Catalog Number:

24606-1-AP

Size:

150ul, Concentration: 500 ug/ml by Nanodrop and 333 ug/ml by Bradford method using BSA as the standard;

Source:

Rabbit

Isotype:

IgG

Immunogen Catalog Number:

AG18063

GenBank Accession Number:

BC140945

GeneID (NCBI):

6011

UNIPROT ID:

Q15835

Full Name:

G protein-coupled receptor kinase 1

Calculated MW:

563 aa, 64 kDa

Observed MW:

64 kDa

Purification Method:

Antigen affinity purification

Recommended Dilutions:

WB 1:500-1:1000

IP 0.5-4.0 ug for 1.0-3.0 mg of total protein lysate

IHC 1:250-1:1000

IF-P 1:50-1:500

Applications

Tested Applications:

WB, IHC, IF-P, IP, ELISA

Cited Applications:

WB, IHC, IF

Species Specificity:

human, mouse

Cited Species:

mouse, zebrafish

Positive Controls:

WB: Y79 cells, mouse eye tissue

IP: Y79 cells,

IHC: mouse eye tissue,

IF-P: mouse eye tissue,

Note-IHC: suggested antigen retrieval with TE buffer pH 9.0; (*) Alternatively, antigen retrieval may be performed with citrate buffer pH 6.0

Background Information

GRK1(G protein-coupled receptor kinase 1) is also named as RHOK, RK, GPRK1 and belongs to the AGC Ser/Thr protein kinase family. It is involved in quenching of light-induced signal transduction in photoreceptor. GRK1 is a photoreceptor-specific enzyme that mediates adaptation of photoreceptors to light and protects these cells against light-induced injury.

Notable Publications

Author	Pubmed ID	Journal	Application
Zhi-Lin Ren	35503560	Zool Res	IHC
Kuanxiang Sun	39520804	Vision Res	WB,IHC
Xiao Li	37098815	FEBS J	WB,IF

Storage

Storage:

Store at -20°C. Stable for one year after shipment.

Storage Buffer:

PBS with 0.02% sodium azide and 50% glycerol, pH7.3

Aliquoting is unnecessary for -20°C storage

*** 20ul sizes contain 0.1% BSA

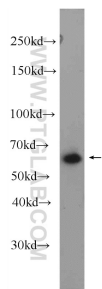
For technical support and original validation data for this product please contact:

T: 1 (888) 4PTGLAB (1-888-478-4522) (toll free in USA), or 1(312) 455-8498 (outside USA)

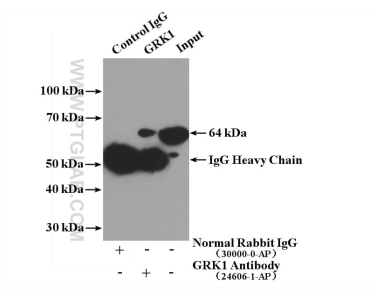
E: proteintech@ptglab.com
W: ptglab.com

This product is exclusively available under Proteintech Group brand and is not available to purchase from any other manufacturer.

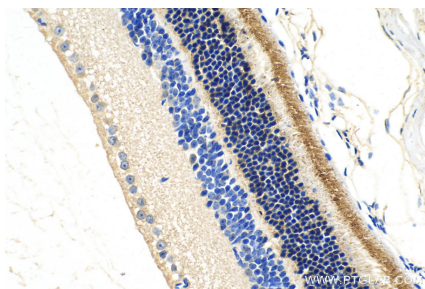
Selected Validation Data



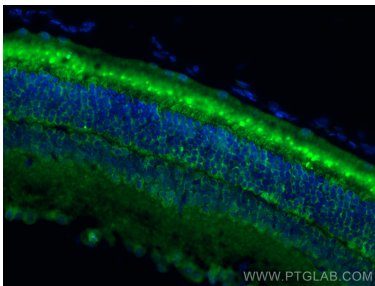
Y79 cells were subjected to SDS PAGE followed by western blot with 24606-1-AP (GRK1 Antibody) at dilution of 1:600 incubated at room temperature for 1.5 hours.



IP result of anti-GRK1 (IP:24606-1-AP, 4ug; Detection:24606-1-AP 1:500) with Y79 cells lysate 1240ug.



Immunohistochemical analysis of paraffin-embedded mouse eye tissue slide using 24606-1-AP (GRK1 antibody) at dilution of 1:500 (under 40x lens). Heat mediated antigen retrieval with Tris-EDTA buffer (pH 9.0).



Immunofluorescent analysis of (4% PFA) fixed mouse eye tissue using GRK1 antibody (24606-1-AP) at dilution of 1:200 and CoraLite®488-Conjugated Goat Anti-Rabbit IgG(H+L).