

For Research Use Only

PHF2 Polyclonal antibody

Catalog Number: 24624-1-AP

1 Publications



Basic Information

Catalog Number:

24624-1-AP

Size:

150ul , Concentration: 700 ug/ml by Nanodrop and 367 ug/ml by Bradford method using BSA as the standard;

Source:

Rabbit

Isotype:

IgG

Immunogen Catalog Number:

AG20257

GenBank Accession Number:

BC152437

GeneID (NCBI):

5253

UNIPROT ID:

O75151

Full Name:

PHD finger protein 2

Calculated MW:

1101 aa, 121 kDa

Observed MW:

150 kDa

Purification Method:

Antigen affinity purification

Recommended Dilutions:

WB 1:200-1:1000

IP 0.5-4.0 ug for 1.0-3.0 mg of total protein lysate

IHC 1:20-1:200

Applications

Tested Applications:

WB, IP, IHC, ELISA

Cited Applications:

WB

Species Specificity:

human

Cited Species:

human

Positive Controls:

WB : Jurkat cells,

IP : HeLa cells,

IHC : human cervical cancer tissue,

Note-IHC: suggested antigen retrieval with TE buffer pH 9.0; (*) Alternatively, antigen retrieval may be performed with citrate buffer pH 6.0

Background Information

PHD finger protein 2 (PHF2), also known as JHDM1E (Jumonji C domain-containing histone demethylase 1E) or GRC5, is a 1101 amino acid protein, which contains one JmjC domain and one PHD-type zinc finger. PHF2 belongs to the JHDM1 histone demethylase family and localizes in the nucleus. PHF2 demethylases both histones and non-histone proteins. PHF2 is widely expressed in various tissues and exists as two alternative splicing isoforms. The gene encoding PHF2 lies in the candidate region for hereditary sensory neuropathy type I (HSN1), a disorder characterized by sensory dysfunction

Notable Publications

Author	Pubmed ID	Journal	Application
Tong-Min Wang	37352861	Am J Hum Genet	WB

Storage

Storage:

Store at -20°C. Stable for one year after shipment.

Storage Buffer:

PBS with 0.02% sodium azide and 50% glycerol pH 7.3.

Aliquoting is unnecessary for -20°C storage

*** 20ul sizes contain 0.1% BSA

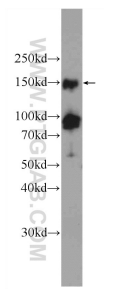
For technical support and original validation data for this product please contact:

T: 1 (888) 4PTGLAB (1-888-478-4522) (toll free in USA), or 1(312) 455-8498 (outside USA)

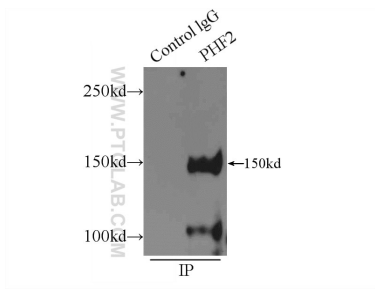
E: proteintech@ptglab.com
W: ptglab.com

This product is exclusively available under Proteintech Group brand and is not available to purchase from any other manufacturer.

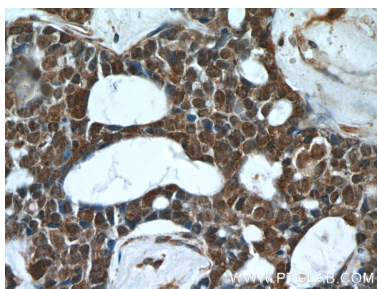
Selected Validation Data



Jurkat cells were subjected to SDS PAGE followed by western blot with 24624-1-AP (PHF2 Antibody) at dilution of 1:300 incubated at room temperature for 1.5 hours.



IP result of anti-PHF2 (IP:24624-1-AP, 4ug; Detection:24624-1-AP 1:500) with HeLa cells lysate 1800ug.



Immunohistochemical analysis of paraffin-embedded human cervical cancer tissue slide using 24624-1-AP (PHF2 Antibody) at dilution of 1:50 (under 40x lens).