

For Research Use Only

SORBS2 Polyclonal antibody

Catalog Number: 24643-1-AP

Featured Product

10 Publications



Basic Information

Catalog Number:

24643-1-AP

Size:

150ul, Concentration: 800 ug/ml by Nanodrop;

Source:

Rabbit

Isotype:

IgG

Immunogen Catalog Number:

AG20041

GenBank Accession Number:

BC011883

GeneID (NCBI):

8470

UNIPROT ID:

O94875

Full Name:

sorbin and SH3 domain containing 2

Calculated MW:

1100 aa, 124 kDa

Observed MW:

70-75 kDa

Purification Method:

Antigen affinity purification

Recommended Dilutions:

WB 1:1000-1:6000

IP 0.5-4.0 ug for 1.0-3.0 mg of total protein lysate

IHC 1:250-1:1000

Applications

Tested Applications:

WB, IP, IHC, ELISA

Cited Applications:

WB, IHC, IF, IP

Species Specificity:

human, mouse, canine

Cited Species:

human, mouse

Note-IHC: suggested antigen retrieval with TE buffer pH 9.0; (*) Alternatively, antigen retrieval may be performed with citrate buffer pH 6.0

Positive Controls:

WB : A2780 cells, MDCK cells, U-251 cells, mouse pancreas tissue, rat pancreas tissue

IP : mouse heart tissue,

IHC : mouse heart tissue, human pancreas cancer tissue

Background Information

SORBS2, also known as ARGBP2, has three C-terminal SH3 domains and an N-terminal sorbin homology (SoHo) domain that interacts with lipid raft proteins. SORBS2 is widely expressed in human tissues and extremely abundant in the heart. In epithelial cells SORBS2 is located in stress fibers and the nucleus; In cardiac muscle cells. SORBS2 is located in the Z-disks of sarcomeres. The subcellular localization suggests that SORBS2 functions as an adapter protein to assemble signaling complexes in stress fibers, and may influence the contractile or elastic properties of cardiac sarcomeres (PMID: 9211900). Alternate splicing results in multiple transcript variants (PMID: 28961272).

Notable Publications

Author	Pubmed ID	Journal	Application
Praju Vikas Anekal	25429109	J Biol Chem	WB, IP
Ming-Ming Liu	35590369	J Transl Med	WB
Mingxue Zhou	25818930	J Cardiovasc Pharmacol Ther	IF

Storage

Storage:

Store at -20°C. Stable for one year after shipment.

Storage Buffer:

PBS with 0.02% sodium azide and 50% glycerol

Aliquoting is unnecessary for -20°C storage

*** 20ul sizes contain 0.1% BSA

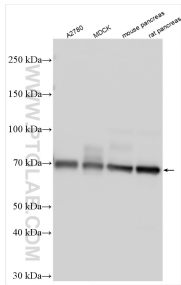
For technical support and original validation data for this product please contact:

T: 1 (888) 4PTGLAB (1-888-478-4522) (toll free in USA), or 1(312) 455-8498 (outside USA)

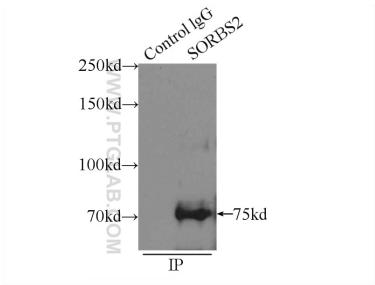
E: proteintech@ptglab.com
W: ptglab.com

This product is exclusively available under Proteintech Group brand and is not available to purchase from any other manufacturer.

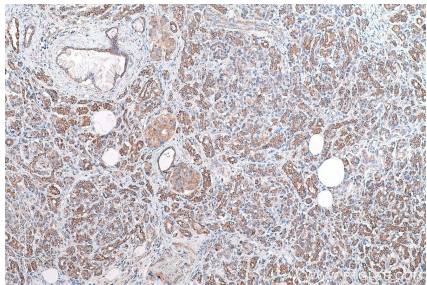
Selected Validation Data



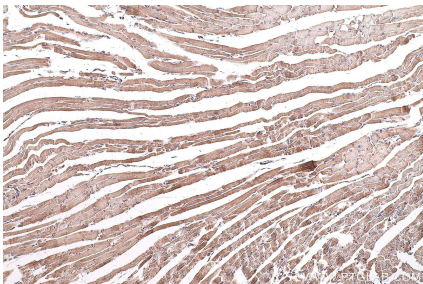
Various lysates were subjected to SDS PAGE followed by western blot with 24643-1-AP (SORBS2 antibody) at dilution of 1:3000 incubated at room temperature for 1.5 hours.



IP result of anti-SORBS2 (IP:24643-1-AP, 4ug; Detection:24643-1-AP 1:500) with mouse heart tissue lysate 4000ug.



Immunohistochemical analysis of paraffin-embedded human pancreas cancer tissue slide using 24643-1-AP (SORBS2 antibody) at dilution of 1:500 (under 10x lens). Heat mediated antigen retrieval with Tris-EDTA buffer (pH 9.0).



Immunohistochemical analysis of paraffin-embedded mouse heart tissue slide using 24643-1-AP (SORBS2 antibody) at dilution of 1:500 (under 10x lens). Heat mediated antigen retrieval with Tris-EDTA buffer (pH 9.0).