

For Research Use Only

SRA1 Polyclonal antibody

Catalog Number: 24655-1-AP

8 Publications



Basic Information

Catalog Number:

24655-1-AP

Size:

150ul, Concentration: 1200 ug/ml by Nanodrop and 513 ug/ml by Bradford method using BSA as the standard;

Source:

Rabbit

Isotype:

IgG

Immunogen Catalog Number:

AG20082

GenBank Accession Number:

BC067895

GeneID (NCBI):

10011

UNIPROT ID:

Q9HD15

Full Name:

steroid receptor RNA activator 1

Calculated MW:

26 kDa

Observed MW:

30 kDa, 33 kDa

Purification Method:

Antigen affinity purification

Recommended Dilutions:

WB 1:2000-1:10000

IHC 1:20-1:200

IF/ICC 1:200-1:800

Applications

Tested Applications:

WB, IHC, IF/ICC, ELISA

Cited Applications:

WB, IHC

Species Specificity:

human, mouse

Cited Species:

human, mouse

Note-IHC: suggested antigen retrieval with TE buffer pH 9.0; (*) Alternatively, antigen retrieval may be performed with citrate buffer pH 6.0

Positive Controls:

WB : A2780 cells, HEK-293 cells

IHC : human breast cancer tissue, mouse testis tissue

IF/ICC : MCF-7 cells,

Background Information

Steroid receptor RNA activator 1 (SRA1), also known as steroid receptor RNA activator protein (SRAP) or SRA, is involved in modulating the activity of multiple transcription factors including the estrogen receptor (ER) (PMID: 20398657). It may play a role in tumorigenesis (PMID: 16152589). The SRA1 gene encodes both SRA1 protein and a non-coding functional RNA that functions as part of a ribonucleoprotein complex activating steroid receptor induced transcription. This polyclonal antibody recognizes endogenous SRA1 isoforms which migrate as a doublet on SDS-PAGE gels (PMID: 12565891; 23907597).

Notable Publications

Author	Pubmed ID	Journal	Application
Wenchao Li,	33242606	Free Radic Biol Med	WB
Xin-Nong Chen	33945857	J Ethnopharmacol	WB
Junhan Zhou	35424752	RSC Adv	WB,IHC

Storage

Storage:

Store at -20°C. Stable for one year after shipment.

Storage Buffer:

PBS with 0.02% sodium azide and 50% glycerol pH 7.3.

Aliquoting is unnecessary for -20°C storage

*** 20ul sizes contain 0.1% BSA

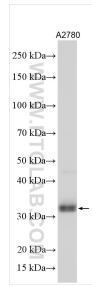
For technical support and original validation data for this product please contact:

T: 1 (888) 4PTGLAB (1-888-478-4522) (toll free in USA), or 1(312) 455-8498 (outside USA)

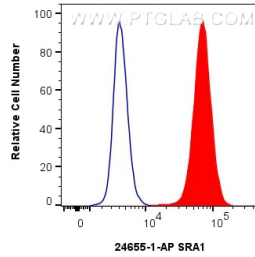
E: proteintech@ptglab.com
W: ptglab.com

This product is exclusively available under Proteintech Group brand and is not available to purchase from any other manufacturer.

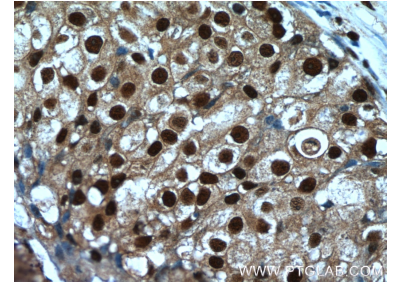
Selected Validation Data



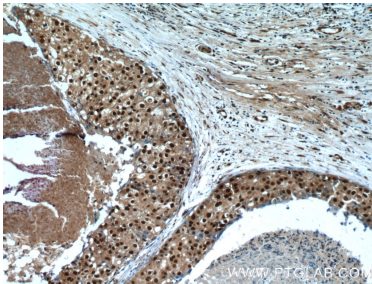
A2780 cells were subjected to SDS PAGE followed by western blot with 24655-1-AP (SRA1 antibody) at dilution of 1:5000 incubated at room temperature for 1.5 hours.



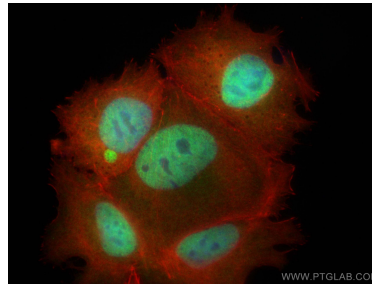
1×10^6 MCF-7 cells were intracellularly stained with 0.8 μ g SRA1 Polyclonal antibody (24655-1-AP) and CoraLite®488-Conjugated Goat Anti-Rabbit IgG(H+L) (SA00013-2)(red), or 0.8 μ g Rabbit IgG control Rabbit PolyAb (30000-0-AP) (blue). Cells were fixed with 4% PFA and permeabilized with Flow Cytometry Perm Buffer (PF00011-C).



Immunohistochemical analysis of paraffin-embedded human breast cancer tissue slide using 24655-1-AP (SRA1 Antibody) at dilution of 1:50 (under 40x lens).



Immunohistochemical analysis of paraffin-embedded human breast cancer tissue slide using 24655-1-AP (SRA1 Antibody) at dilution of 1:50 (under 10x lens).



Immunofluorescent analysis of (4% PFA) fixed MCF-7 cells using SRA1 antibody (24655-1-AP) at dilution of 1:400 and CoraLite®488-Conjugated Goat Anti-Rabbit IgG(H+L) (SA00013-2), CL594-phalloidin (red).