

For Research Use Only

# LRSAM1 Polyclonal antibody

Catalog Number: 24666-1-AP

Featured Product

3 Publications



## Basic Information

### Catalog Number:

24666-1-AP

### Size:

150ul, Concentration: 1000 ug/ml by Nanodrop and 493 ug/ml by Bradford method using BSA as the standard;

### Source:

Rabbit

### Isotype:

IgG

### Immunogen Catalog Number:

AG20415

### GenBank Accession Number:

BC009239

### GeneID (NCBI):

90678

### UNIPROT ID:

Q6UWEO

### Full Name:

leucine rich repeat and sterile alpha motif containing 1

### Calculated MW:

723 aa, 84 kDa

### Observed MW:

84 kDa

### Purification Method:

Antigen affinity purification

### Recommended Dilutions:

WB 1:500-1:2000

IHC 1:20-1:200

IF/ICC 1:200-1:800

## Applications

### Tested Applications:

WB, IHC, IF/ICC, ELISA

### Cited Applications:

WB, IF

### Species Specificity:

human, mouse

### Cited Species:

human, mouse

**Note-IHC: suggested antigen retrieval with TE buffer pH 9.0; (\*) Alternatively, antigen retrieval may be performed with citrate buffer pH 6.0**

### Positive Controls:

WB: Jurkat cells, HepG2 cells, mouse liver tissue

IHC: human skeletal muscle tissue,

IF/ICC: A431 cells,

## Background Information

LRSAM1 also named as hTAL, RIFLE or Tsg101 associated ligase is a 723 amino acid protein, which contains 6 LRR repeats, 1 Ring-type zinc finger and 1 SAM domain. LRSAM1 is localized in cytoplasm and highly expressed in adult spinal cord motoneurons as well as in fetal spinal cord and muscle tissue. As a E3 ubiquitin protein ligase, LRSAM1 mediates monoubiquitination of TSG101 at multiple sites, leading to inactivate the ability of TSG101 to sort endocytic and exocytic cargos, LRSAM1 gene mutation has an association with Charcot Marie Tooth disease 2P.

## Notable Publications

Author	Pubmed ID	Journal	Application
Lili Pian	31592239	Cancer Cell Int	WB
Chang Woo Chae	37357416	Autophagy	WB,IF
Qinqin Cui	36738734	Cell	IF

## Storage

### Storage:

Store at -20°C. Stable for one year after shipment.

### Storage Buffer:

PBS with 0.02% sodium azide and 50% glycerol pH 7.3.

Aliquoting is unnecessary for -20°C storage

\*\*\* 20ul sizes contain 0.1% BSA

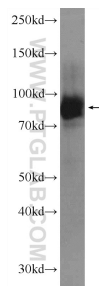
For technical support and original validation data for this product please contact:

T: 1 (888) 4PTGLAB (1-888-478-4522) (toll free in USA), or 1(312) 455-8498 (outside USA)

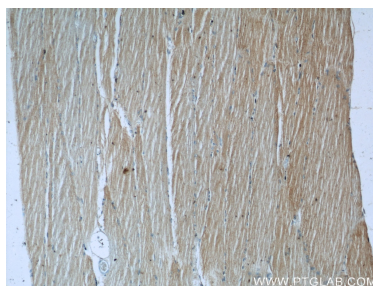
E: proteintech@ptglab.com  
W: ptglab.com

This product is exclusively available under Proteintech Group brand and is not available to purchase from any other manufacturer.

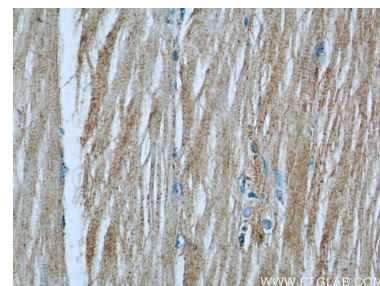
## Selected Validation Data



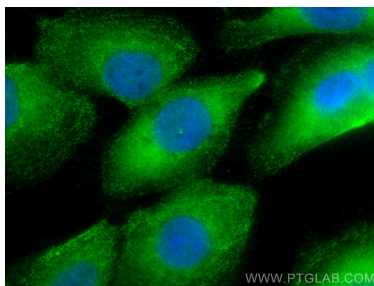
Jurkat cells were subjected to SDS PAGE followed by western blot with 24666-1-AP (LRSAM1 Antibody) at dilution of 1:1000 incubated at room temperature for 1.5 hours.



Immunohistochemical analysis of paraffin-embedded human skeletal muscle slide using 24666-1-AP (LRSAM1 Antibody) at dilution of 1:50.



Immunohistochemical analysis of paraffin-embedded human skeletal muscle slide using 24666-1-AP (LRSAM1 Antibody) at dilution of 1:50.



Immunofluorescent analysis of (-20°C Methanol) fixed A431 cells using LRSAM1 antibody (24666-1-AP) at dilution of 1:400 and CoraLite®488-Conjugated Goat Anti-Rabbit IgG(H+L) (SA00013-2).