

For Research Use Only

KIF7 Polyclonal antibody

Catalog Number: 24693-1-AP

Featured Product

6 Publications



Basic Information

Catalog Number:

24693-1-AP

Size:

150ul, Concentration: 800 ug/ml by Nanodrop;

Source:

Rabbit

Isotype:

IgG

Immunogen Catalog Number:

AG19119

GenBank Accession Number:

BC112271

GeneID (NCBI):

374654

UNIPROT ID:

Q2M1P5

Full Name:

kinesin family member 7

Calculated MW:

1343 aa, 151 kDa

Observed MW:

140 kDa

Purification Method:

Antigen affinity purification

Recommended Dilutions:

WB 1:500-1:2000

IP 0.5-4.0 ug for 1.0-3.0 mg of total protein lysate

Applications

Tested Applications:

WB, IP, ELISA

Cited Applications:

WB, IHC, IF

Species Specificity:

human

Cited Species:

human, mouse

Positive Controls:

WB : HEK-293 cells,

IP : HEK-293 cells,

Background Information

KIF7(Kinesin family member 7) is a microtubule interacting protein that functions to regulate Hh signaling by maintaining the architecture of the primary cilium, a complex microtubule-based organelle with many signal transduction functions (PMID: 26439735). KIF7 has been shown to have both negative and positive roles in Shh signal transduction. Without a ligand, KIF7 localizes to the cilium base where it forms a complex with Gli proteins and other pathway components and promotes the processing of GliRs (PMID: 21552264).

Notable Publications

Author	Pubmed ID	Journal	Application
Yue Hu	32945133	Thorac Cancer	WB
Lu Zhang	34686662	Cell Death Dis	WB,IHC
Chuan Chen	34162535	Sci Adv	IF

Storage

Storage:

Store at -20°C. Stable for one year after shipment.

Storage Buffer:

PBS with 0.02% sodium azide and 50% glycerol, pH7.3

Aliquoting is unnecessary for -20°C storage

*** 20ul sizes contain 0.1% BSA

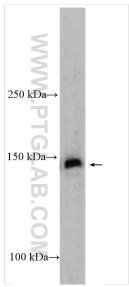
For technical support and original validation data for this product please contact:

T: 1 (888) 4PTGLAB (1-888-478-4522) (toll free in USA), or 1(312) 455-8498 (outside USA)

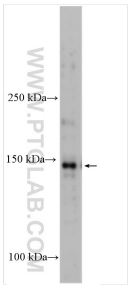
E: proteintech@ptglab.com
W: ptglab.com

This product is exclusively available under Proteintech Group brand and is not available to purchase from any other manufacturer.

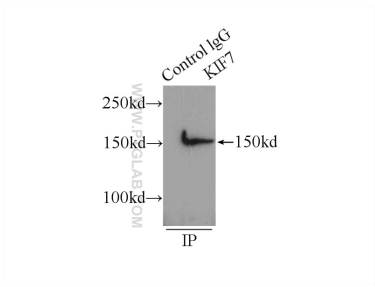
Selected Validation Data



HEK-293 cells were subjected to SDS PAGE followed by western blot with 24693-1-AP (KIF7 antibody) at dilution of 1:1000 incubated at room temperature for 1.5 hours.



Various lysates were subjected to SDS PAGE followed by western blot with 24693-1-AP (KIF7 antibody) at dilution of 1:1000 incubated at room temperature for 1.5 hours.



IP result of anti-KIF7 (IP:24693-1-AP, 5ug; Detection:24693-1-AP 1:500) with HEK-293 cells lysate 1760ug.