

For Research Use Only

# ACE Polyclonal antibody

Catalog Number: 24743-1-AP

31 Publications



## Basic Information

Catalog Number:

24743-1-AP

Size:

150ul, Concentration: 600 ug/ml by Nanodrop;

Source:

Rabbit

Isotype:

IgG

Immunogen Catalog Number:

AG20654

GenBank Accession Number:

BC036375

GeneID (NCBI):

1636

UNIPROT ID:

P12821

Full Name:

angiotensin I converting enzyme (peptidyl-di-peptidase A) 1

Calculated MW:

150 kDa

Observed MW:

170 kDa

Purification Method:

Antigen affinity purification

Recommended Dilutions:

WB 1:500-1:2000

IHC 1:50-1:500

## Applications

Tested Applications:

WB, IHC, ELISA

Cited Applications:

WB, IHC, IF

Species Specificity:

human, mouse, rat

Cited Species:

human, mouse, rat, bovine

**Note-IHC: suggested antigen retrieval with TE buffer pH 9.0; (\*) Alternatively, antigen retrieval may be performed with citrate buffer pH 6.0**

Positive Controls:

WB: mouse heart tissue,

IHC: rat lung tissue, human lung tissue, mouse lung tissue

## Background Information

ACE (Angiotensin-converting enzyme) is also named as DCP, DCP1 and belongs to the peptidase M2 family. It is involved in catalyzing the conversion of angiotensin I into a physiologically active peptide angiotensin II. ACE also has a glycosidase activity which releases GPI-anchored proteins from the membrane by cleaving the mannose linkage in the GPI moiety. It has 4 isoforms produced by alternative splicing. The full length protein has 15 glycosylation sites and it can show a molecular weight of 170 kDa (PMID:16804085).

## Notable Publications

Author	Pubmed ID	Journal	Application
Boyu Yuan	36306919	Arch Biochem Biophys	WB
Donatella Treppiedi	35712238	Front Endocrinol (Lausanne)	IF
Nan Wu	32121598	Antioxidants (Basel)	WB

## Storage

Storage:

Store at -20°C. Stable for one year after shipment.

Storage Buffer:

PBS with 0.02% sodium azide and 50% glycerol pH 7.3.

Aliquoting is unnecessary for -20°C storage

\*\*\* 20ul sizes contain 0.1% BSA

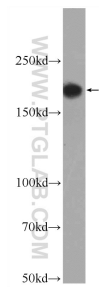
For technical support and original validation data for this product please contact:

T: 1 (888) 4PTGLAB (1-888-478-4522) (toll free in USA), or 1(312) 455-8498 (outside USA)

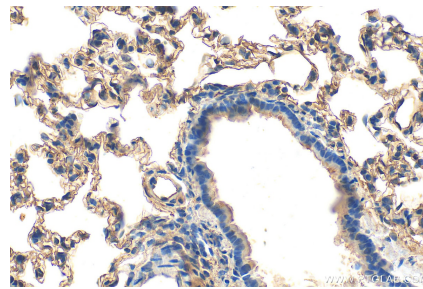
E: proteintech@ptglab.com  
W: ptglab.com

This product is exclusively available under Proteintech Group brand and is not available to purchase from any other manufacturer.

## Selected Validation Data



mouse heart tissue were subjected to SDS PAGE followed by western blot with 24743-1-AP (ACE Antibody) at dilution of 1:1000 incubated at room temperature for 1.5 hours.



Immunohistochemical analysis of paraffin-embedded rat lung tissue slide using 24743-1-AP (ACE antibody) at dilution of 1:200 (under 40x lens). Heat mediated antigen retrieval with Tris-EDTA buffer (pH 9.0).