

For Research Use Only

KLHL31 Polyclonal antibody

Catalog Number: 24781-1-AP

Featured Product



Basic Information

| | | |
|--|---|---|
| Catalog Number: 24781-1-AP | GenBank Accession Number: BC137267 | Purification Method: Antigen affinity purification |
| Size: 150ul , Concentration: 800 µg/ml by Nanodrop and 407 µg/ml by Bradford method using BSA as the standard; | GeneID (NCBI): 401265 | Recommended Dilutions: WB 1:500-1:2000 IHC 1:50-1:500 IF 1:20-1:200 |
| Source: Rabbit | Full Name: kelch-like 31 (Drosophila) | |
| Isotype: IgG | Calculated MW: 634 aa, 70 kDa | |
| Immunogen Catalog Number: AG20462 | Observed MW: 60-70 kDa | |

Applications

| | |
|---|---|
| Tested Applications: IF, IHC, WB, ELISA | Positive Controls: |
| Species Specificity: human, mouse | WB: mouse embryo tissue, Jurkat cells |
| Note-IHC: <i>suggested antigen retrieval with TE buffer pH 9.0; (*) Alternatively, antigen retrieval may be performed with citrate buffer pH 6.0</i> | IHC: mouse skeletal muscle tissue, human colon cancer tissue |
| | IF: HepG2 cells, |

Background Information

KLHL31 also named as BKLHD6, KBTBD1, or Kelch like protein 31 is a 634 amino acid protein, which contains one 1 BACK domain, one BTB domain and six Kelch repeats. KLHL31 as a transcription repressor in MAPK/JNK signaling pathway to regulate cellular functions. KLHL31 is strongly expressed in skeletal muscle and weakly in heart.

Storage

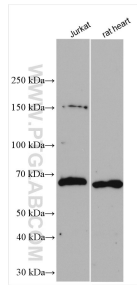
Storage:
Store at -20°C. Stable for one year after shipment.
Storage Buffer:
PBS with 0.02% sodium azide and 50% glycerol pH 7.3.
Aliquoting is unnecessary for -20°C storage

*** 20ul sizes contain 0.1% BSA

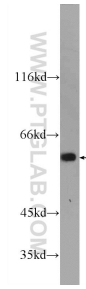
For technical support and original validation data for this product please contact:
T: 1 (888) 4PTGLAB (1-888-478-4522) (toll free in USA), or 1(312) 455-8498 (outside USA)
E: proteintech@ptglab.com
W: ptglab.com

This product is exclusively available under Proteintech Group brand and is not available to purchase from any other manufacturer.

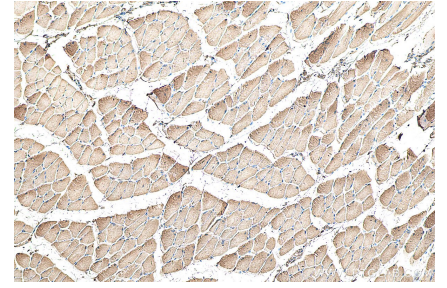
Selected Validation Data



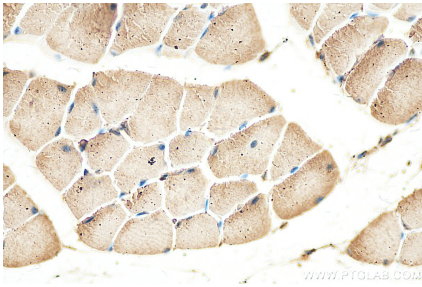
Various lysates were subjected to SDS PAGE followed by western blot with 24781-1-AP (KLHL31 antibody) at dilution of 1:2000 incubated at room temperature for 1.5 hours.



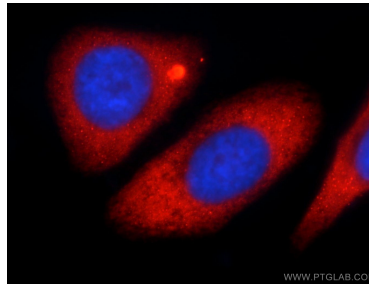
mouse embryo tissue were subjected to SDS PAGE followed by western blot with 24781-1-AP (KLHL31 Antibody) at dilution of 1:1000 incubated at room temperature for 1.5 hours.



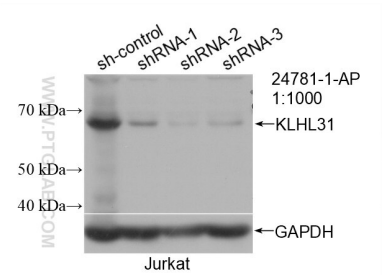
Immunohistochemical analysis of paraffin-embedded mouse skeletal muscle tissue slide using 24781-1-AP (KLHL31 antibody) at dilution of 1:200 (under 10x lens). Heat mediated antigen retrieval with Tris-EDTA buffer (pH 9.0).



Immunohistochemical analysis of paraffin-embedded mouse skeletal muscle tissue slide using 24781-1-AP (KLHL31 antibody) at dilution of 1:200 (under 40x lens). Heat mediated antigen retrieval with Tris-EDTA buffer (pH 9.0).



Immunofluorescent analysis of HepG2 cells using 24781-1-AP (KLHL31 antibody) at dilution of 1:50 and Rhodamine-Goat anti-Rabbit IgG.



WB result of KLHL31 antibody (24781-1-AP; 1:1000; incubated at room temperature for 1.5 hours) with sh-Control and sh-KLHL31 transfected Jurkat cells.