

For Research Use Only

GIGYF2 Polyclonal antibody

Catalog Number: 24790-1-AP

Featured Product

9 Publications



Basic Information

Catalog Number:

24790-1-AP

Size:

150ul, Concentration: 550 ug/ml by Nanodrop;

Source:

Rabbit

Isotype:

IgG

Immunogen Catalog Number:

AG20329

GenBank Accession Number:

BC146775

GeneID (NCBI):

26058

UNIPROT ID:

Q6Y7W6

Full Name:

GRB10 interacting GYF protein 2

Calculated MW:

1320 aa, 152 kDa

Observed MW:

150-170 kDa

Purification Method:

Antigen affinity purification

Recommended Dilutions:

WB 1:2000-1:10000

IP 0.5-4.0 ug for 1.0-3.0 mg of total protein lysate

IHC 1:20-1:200

IF/ICC 1:50-1:500

Applications

Tested Applications:

WB, IHC, IF/ICC, IP, ELISA

Cited Applications:

WB, IHC, IF, IP

Species Specificity:

human, mouse

Cited Species:

human, mouse

Note-IHC: suggested antigen retrieval with TE buffer pH 9.0; (*) Alternatively, antigen retrieval may be performed with citrate buffer pH 6.0

Positive Controls:

WB : HeLa cells, Jurkat cells, NIH/3T3 cells

IP : Jurkat cells,

IHC : human breast cancer tissue,

IF/ICC : HeLa cells,

Background Information

GIGYF2 (GRB10 interacting GYF protein 2) was initially identified through its interaction with GRB10, an adapter protein that binds activated INS-like growth factor (IGF-I) and INS receptors (PMID: 12771153; 19744960). It may act cooperatively with GRB10 to regulate tyrosine kinase receptor signaling. The gene of GIGYF2 has been proposed as the Parkinson-disease (PD) gene underlying the PARK11 locus (PMID: 18358451).

Notable Publications

Author	Pubmed ID	Journal	Application
Michelle Harreman Lehner	36288698	Cell Rep	IP, WB
Limei Zou	35756894	iScience	WB, IF
Xiuying Liang	34944635	Biomedicines	IHC

Storage

Storage:

Store at -20°C. Stable for one year after shipment.

Storage Buffer:

PBS with 0.02% sodium azide and 50% glycerol pH 7.3.

Aliquoting is unnecessary for -20°C storage

*** 20ul sizes contain 0.1% BSA

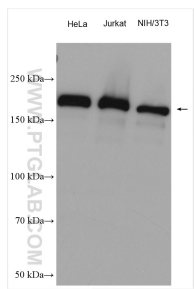
For technical support and original validation data for this product please contact:

T: 1 (888) 4PTGLAB (1-888-478-4522) (toll free in USA), or 1(312) 455-8498 (outside USA)

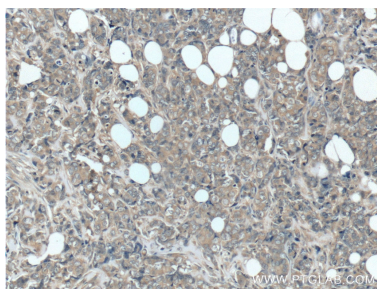
E: proteintech@ptglab.com
W: ptglab.com

This product is exclusively available under Proteintech Group brand and is not available to purchase from any other manufacturer.

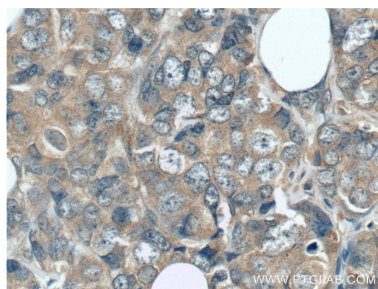
Selected Validation Data



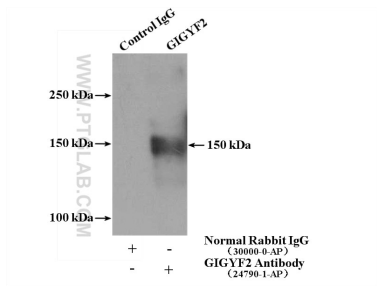
Various lysates were subjected to SDS PAGE followed by western blot with 24790-1-AP (GIGYF2 antibody) at dilution of 1:5000 incubated at room temperature for 1.5 hours.



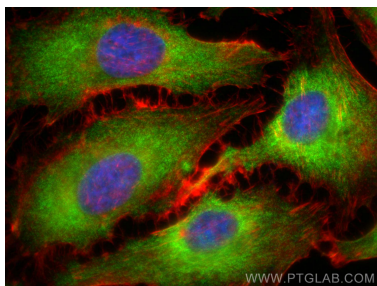
Immunohistochemical analysis of paraffin-embedded human breast cancer tissue slide using 24790-1-AP (GIGYF2 Antibody) at dilution of 1:50 (under 10x lens).



Immunohistochemical analysis of paraffin-embedded human breast cancer tissue slide using 24790-1-AP (GIGYF2 Antibody) at dilution of 1:50 (under 40x lens).



IP result of anti-GIGYF2 (IP:24790-1-AP, 4ug; Detection:24790-1-AP 1:2000) with Jurkat cells lysate 2000ug.



Immunofluorescent analysis of (-20°C Ethanol) fixed HeLa cells using GIGYF2 antibody (24790-1-AP) at dilution of 1:200 and CoraLite®488-Conjugated AffiniPure Goat Anti-Rabbit IgG(H+L) (SA00013-2), CL594-phalloidin (red).