

For Research Use Only

FAM92A1 Polyclonal antibody

Catalog Number: 24803-1-AP

Featured Product

3 Publications



Basic Information

Catalog Number: 24803-1-AP	GenBank Accession Number: BC014598	Purification Method: Antigen affinity purification
Size: 150ul, Concentration: 700 µg/ml by Nanodrop and 300 µg/ml by Bradford method using BSA as the standard;	GeneID (NCBI): 137392	Recommended Dilutions: WB 1:500-1:1000 IP 0.5-4.0 ug for IP and 1:500-1:1000 for WB
Source: Rabbit	Full Name: family with sequence similarity 92, member A1	IHC 1:20-1:200 IF 1:20-1:200
Isotype: IgG	Calculated MW: 289 aa, 33 kDa	
Immunogen Catalog Number: AG20738	Observed MW: 29-33 kDa	

Applications

Tested Applications: IF, IHC, IP, WB, ELISA	Positive Controls:
Cited Applications: IF, WB	WB: HeLa cells,
Species Specificity: human	IP: HeLa cells,
Cited Species: HUMAN	IHC: human renal cell carcinoma tissue,
Note-IHC: suggested antigen retrieval with TE buffer pH 9.0 ; (*) Alternatively, antigen retrieval may be performed with citrate buffer pH 6.0	IF: HeLa cells,

Background Information

Notable Publications

Author	Pubmed ID	Journal	Application
Asier Iturrate	36084634	Am J Hum Genet	WB
Xing Rong Guo	31492191	J Exp Clin Cancer Res	IF
Feng-Qian Li	27528616	Mol Cell Biol	WB, IF

Storage

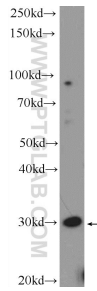
Storage:
Store at -20°C. Stable for one year after shipment.
Storage Buffer:
PBS with 0.02% sodium azide and 50% glycerol pH 7.3.
Aliquoting is unnecessary for -20°C storage

*** 20ul sizes contain 0.1% BSA

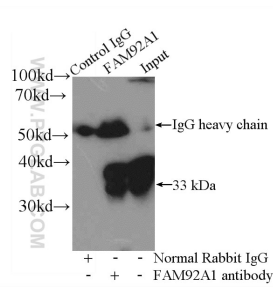
For technical support and original validation data for this product please contact:
T: 1 (888) 4PTGLAB (1-888-478-4522) (toll free in USA), or 1(312) 455-8498 (outside USA)
E: proteintech@ptglab.com
W: ptglab.com

This product is exclusively available under Proteintech Group brand and is not available to purchase from any other manufacturer.

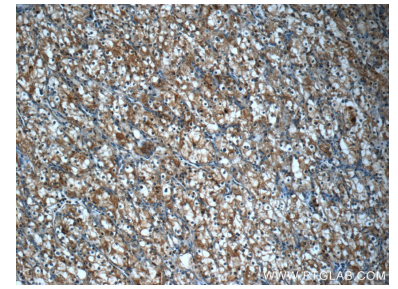
Selected Validation Data



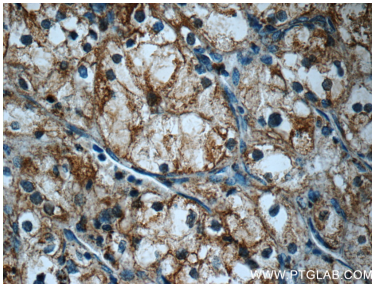
HeLa cells were subjected to SDS PAGE followed by western blot with 24803-1-AP (FAM92A1 Antibody) at dilution of 1:600 incubated at room temperature for 1.5 hours.



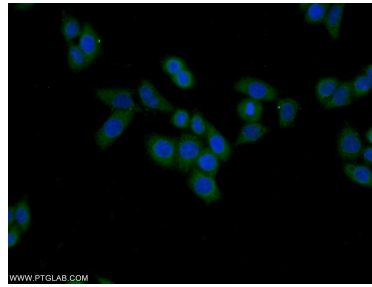
IP Result of anti-FAM92A1 (IP:24803-1-AP, 4ug; Detection:24803-1-AP 1:500) with HeLa cells lysate 4000ug.



Immunohistochemical analysis of paraffin-embedded human renal cell carcinoma tissue slide using 24803-1-AP (FAM92A1 Antibody) at dilution of 1:50 (under 10x lens).



Immunohistochemical analysis of paraffin-embedded human renal cell carcinoma tissue slide using 24803-1-AP (FAM92A1 Antibody) at dilution of 1:50 (under 40x lens).



Immunofluorescent analysis of HeLa cells using 24803-1-AP (FAM92A1 antibody) at dilution of 1:50 and Alexa Fluor 488-conjugated AffiniPure Goat Anti-Rabbit IgG(H+L).