

For Research Use Only

# DMGDH Polyclonal antibody

Catalog Number: 24813-1-AP **3 Publications**



## Basic Information

<b>Catalog Number:</b> 24813-1-AP	<b>GenBank Accession Number:</b> BC022388	<b>Purification Method:</b> Antigen affinity purification
<b>Size:</b> 150ul , Concentration: 600 µg/ml by Nanodrop and 340 µg/ml by Bradford method using BSA as the standard;	<b>GeneID (NCBI):</b> 29958	<b>Recommended Dilutions:</b> WB 1:2000-1:12000 IHC 1:20-1:200 IF 1:50-1:500
<b>Source:</b> Rabbit	<b>Full Name:</b> dimethylglycine dehydrogenase	
<b>Isotype:</b> IgG	<b>Calculated MW:</b> 866 aa, 97 kDa	
<b>Immunogen Catalog Number:</b> AG20529	<b>Observed MW:</b> 97 kDa	

## Applications

<b>Tested Applications:</b> IF, IHC, WB, ELISA	<b>Positive Controls:</b> WB : mouse kidney tissue, mouse liver tissue, rat liver tissue, rat kidney tissue IHC : human liver cancer tissue, IF : HepG2 cells,
<b>Cited Applications:</b> IF, IHC, WB	
<b>Species Specificity:</b> human, mouse, rat	
<b>Cited Species:</b> human, mouse	

**Note-IHC: suggested antigen retrieval with TE buffer pH 9.0; (\*) Alternatively, antigen retrieval may be performed with citrate buffer pH 6.0**

## Background Information

DMGDH(Dimethylglycine dehydrogenase, mitochondrial) is also named as ME2GLYDH and belongs to the GcvT family. It catalyzes the oxidative demethylation of dimethylglycine to form sarcosine and it plays a role in choline catabolism in the liver. The full length protein has a transit peptide.

## Notable Publications

Author	Pubmed ID	Journal	Application
Yin Cao	30901224	J Proteome Res	WB
I-Ling Lu	29950674	Nat Commun	IF
Gang Liu	27119355	Oncotarget	WB,IHC

## Storage

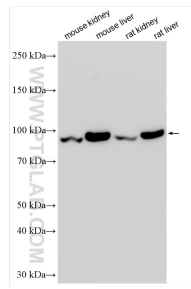
**Storage:**  
Store at -20°C. Stable for one year after shipment.  
**Storage Buffer:**  
PBS with 0.02% sodium azide and 50% glycerol pH 7.3.  
Aliquoting is unnecessary for -20°C storage

\*\*\* 20ul sizes contain 0.1% BSA

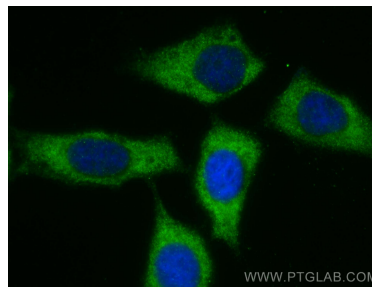
For technical support and original validation data for this product please contact:  
T: 1 (888) 4PTGLAB (1-888-478-4522) (toll free in USA), or 1(312) 455-8498 (outside USA) E: proteintech@ptglab.com W: ptglab.com

This product is exclusively available under Proteintech Group brand and is not available to purchase from any other manufacturer.

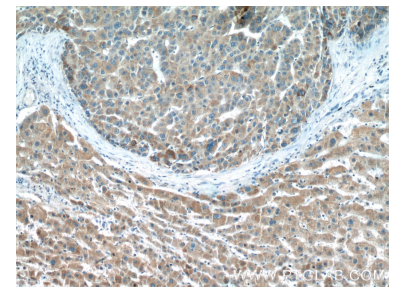
## Selected Validation Data



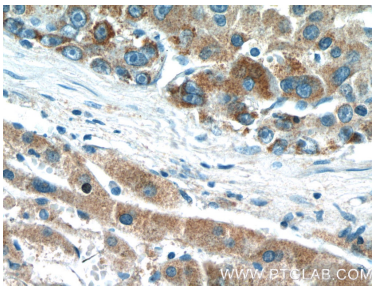
Various lysates were subjected to SDS PAGE followed by western blot with 24813-1-AP (DMGDH antibody) at dilution of 1:6000 incubated at room temperature for 1.5 hours.



Immunofluorescent analysis of (-20°C Methanol) fixed HepG2 cells using DMGDH antibody (24813-1-AP) at dilution of 1:200 and CoraLite® 488-Conjugated AffiniPure Goat Anti-Rabbit IgG(H+L).



Immunohistochemical analysis of paraffin-embedded human liver cancer tissue slide using 24813-1-AP (DMGDH Antibody) at dilution of 1:200 (under 10x lens).



Immunohistochemical analysis of paraffin-embedded human liver cancer tissue slide using 24813-1-AP (DMGDH Antibody) at dilution of 1:200 (under 40x lens).